

Cynomolgus Hemojuvelin / HFE2 (His Tag) recombinant protein



Catalog Number: 502545

General Information

Protein Construction

A DNA sequence encoding the cynomolgus HFE2 (EHH15137.1) (Met1-Ser400) was expressed with a polyhistidine tag at the C-terminus.

Organism

Cynomolgus

Expression Host

Baculovirus-Insect Cells

QC Testing

Purity

> 95 % as determined by SDS-PAGE

Endotoxin

< 1.0 EU per μg of the protein as determined by the LAL method

Stability

Samples are stable for up to twelve months from date of receipt at -70°C

Predicted N terminal

Gln 36

Molecular Mass

The recombinant cynomolgus HFE2 comprises 376 amino acids and has a calculated molecular mass of 40.2 KDa. The apparent molecular mass of

the protein is approximately 32 KDa in SDS-PAGE.

Formulation

Lyophilized from sterile 20 mM Tris, 500 mM NaCl, 10% glycerol, pH 7.0.

1. 5 % trehalose and mannitol are added as protectants before lyophilization.
2. Please contact us for any concerns or special requirements.

Usage Guide

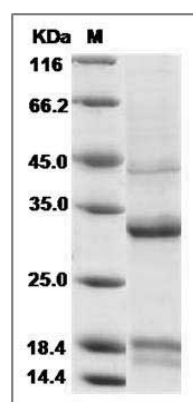
Storage

Store it under sterile conditions at -20°C to -80°C . It is recommended that the protein be aliquoted for optimal storage. Avoid repeated freeze-thaw cycles.

Reconstitution

Adding sterile water, prepare a stock solution of 0.25 mg/ml. Concentration is measured by UV-Vis.

SDS-PAGE



Cynomolgus Hemojuvelin / HFE2 Protein (His Tag) SDS-PAGE