

Anti-HP1 gamma/CBX3 (6D7) Mouse antibody



Catalog Number: 168145

Product name

Anti-HP1 gamma/CBX3 (6D7) Mouse antibody

Specificity

Human, Rat, Mouse

Antibody description

HP1 gamma/CBX3 (6D7) Mouse monoclonal antibody

Preparation

Antigen: Purified recombinant protein expressed in E.coli.

Formulation

PBS(pH 7.4) containing with 0.02% sodium azide and 50% glycerol.

Storage

Store at 4°C short term. Store at -20°C long term. Avoid freeze / thaw cycle.

Clonality

Monoclonal

Ig Type

Mouse IgG1

Applications

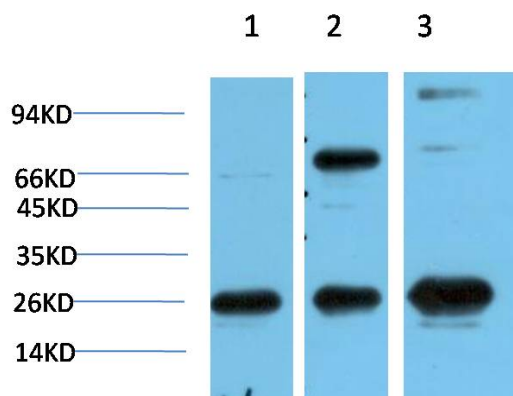
WB, IHC-P

Dilutions

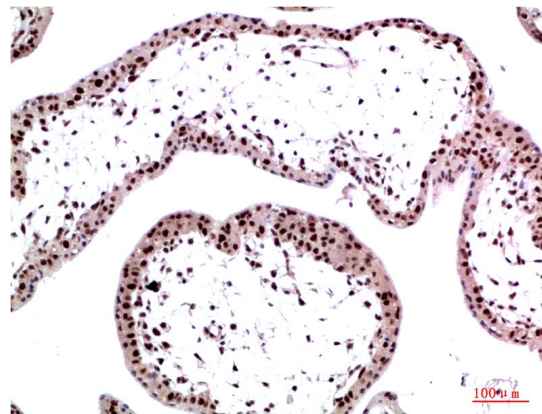
WB: 1/1,000-2,000

IHC: 1/100-200

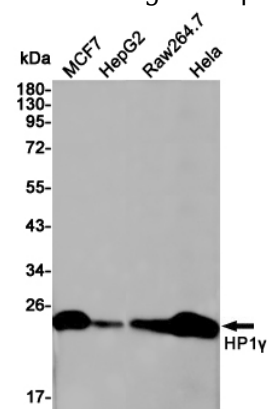
Validations



Western blot analysis of 1) HeLa Cell Lysate, 2)3T3 Cell Lysate, 3) PC12 Cell Lysate using HP-1 γ Mouse mAb diluted at 1:1000.



Immunohistochemical analysis of paraffin-embedded Human Placenta Tissue using HP-1 γ



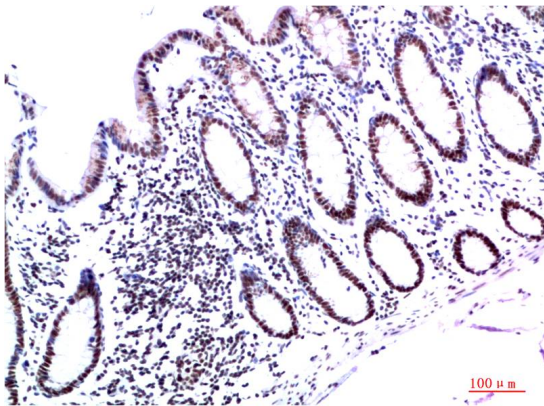
Mouse mAb diluted at 1:200.

Western blot detection of HP1 γ in MCF7, HepG2, Raw264.7, HeLa cell lysates using HP1 γ (6F7) Mouse mAb(1:1000 diluted). Predicted band size:24KDa. Observed band size:24KDa.

Anti-HP1 gamma/CBX3 (6D7) Mouse antibody



Catalog Number: 168145



Immunohistochemical analysis of paraffin-embedded Human Colon Carcinoma Tissue using HP-1 γ Mouse mAb diluted at 1:200.