

# CDC6 antibody



Catalog Number: 107145

## Product name

CDC6 antibody

## Immunogen

[Human CDC6 Recombinant protein \(His tag\)](#)

## Specificity

Human; other species not tested.

## Antibody description

CDC6 Mouse Monoclonal antibody. Positive WB detected in HeLa cells. Positive IF detected in HepG2 cells. Observed molecular weight by Western-blot: 65 kDa

## Preparation

This antibody was obtained by immunization of CDC6 recombinant protein (Accession Number: NM\_001254). Purification method: Protein G purified.

## Formulation

PBS with 0.02% sodium azide and 50% glycerol pH 7.3.

## Storage

Store at -20°C. DO NOT ALIQUOT

## Clonality

Monoclonal

## Ig Type

Mouse IgG1

## Applications

ELISA, WB, IF

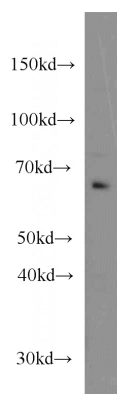
## Dilutions

Recommended Dilution:

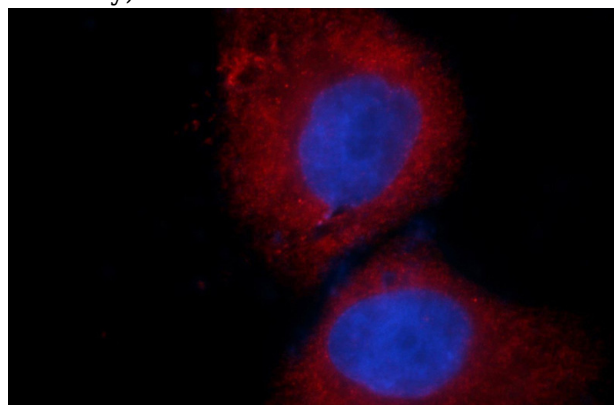
WB: 1:200-1:2000

IF: 1:20-1:200

## Validations



HeLa cells were subjected to SDS PAGE followed by western blot with Catalog No:107145(CDC6 antibody) at dilution of 1:500



Immunofluorescent analysis of HepG2 cells using Catalog No:107145(CDC6 Antibody) at dilution of 1:50 and Rhodamine-Goat anti-Mouse IgG