

# Anti-Phospho-Cofilin (Ser3) Rabbit antibody



Catalog Number: 167145

## Product name

Anti-Phospho-Cofilin (Ser3) Rabbit antibody

## Specificity

Human, Mouse, Rat

## Antibody description

Phospho-Cofilin (Ser3) Rabbit polyclonal antibody

## Preparation

Antigen: Peptide sequence around phosphorylation site of serine 3 (M-A-S(p)-G-V) derived from Human cofilin.

## Formulation

Supplied at 1.0mg/mL in phosphate buffered saline (without Mg<sup>2+</sup> and Ca<sup>2+</sup>), pH 7.4, 150mM NaCl, 0.02% sodium azide and 50% glycerol.

## Storage

Store at 4°C short term. Store at -20°C long term. Avoid freeze / thaw cycle.

## Clonality

Polyclonal

## Ig Type

Rabbit IgG

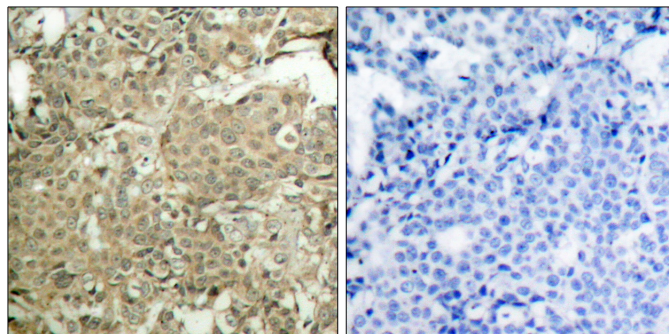
## Applications

WB, IHC-P, ICC/IF

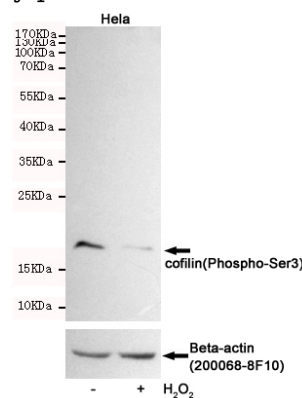
## Dilutions

WB:1/500-1/1000 ICC:1/100-1/200 IHC:1/50-1/100

## Validations

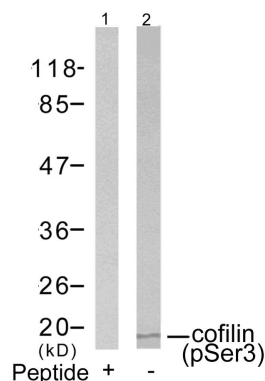


Immunohistochemical analysis of paraffin-embedded human breast carcinoma tissue using cofilin (Phospho-Ser3) Antibody (left) or the same antibody preincubated with blocking peptide (right).



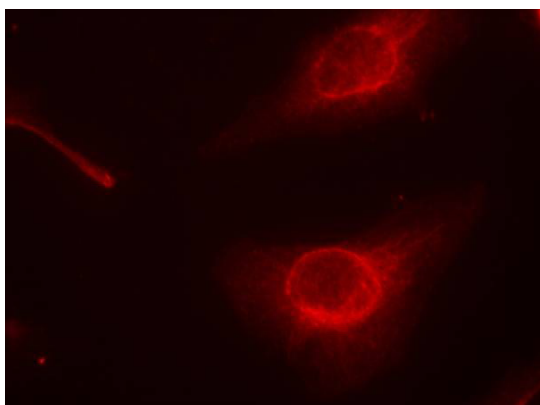
(right).

Western blot detection of cofilin(Phospho-Ser3) in HeLa cells untreated or treated with H<sub>2</sub>O<sub>2</sub> using cofilin(Phospho-Ser3) Rabbit pAb (dilution 1:500, upper) or u03b2-Actin Mouse mAb (200068-8F10, lower). Predicted band size: 19kDa. Observed band



size: 19kDa.

Western blot analysis of extracts from COLO205 cells using cofilin (Phospho-Ser3) Antibody (Lane 2) and the same antibody preincubated with blocking peptide (Lane 1).



Immunofluorescence staining of methanol-fixed HeLa cells using cofilin (Phospho-Ser3) Antibody .