

PPP1CC antibody



Catalog Number: 114145

Product name

PPP1CC antibody

IP: 1:200-1:2000

IHC: 1:20-1:200

Specificity

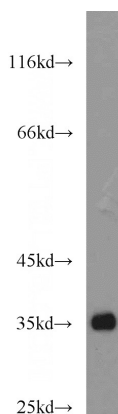
Human, Mouse, Rat; other species not tested.

IF: 1:10-1:100

Antibody description

PPP1CC Rabbit Polyclonal antibody. Positive IP detected in mouse brain tissue. Positive WB detected in mouse brain tissue, L02 cells. Positive IHC detected in human heart tissue, human liver tissue. Positive IF detected in HeLa cells. Observed molecular weight by Western-blot: 35 kDa

Validations



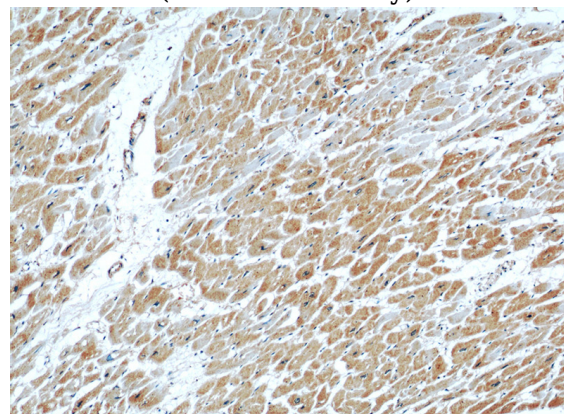
Preparation

This antibody was obtained by immunization of Peptide (Accession Number: NM_002710). Purification method: Antigen affinity purified.

mouse brain tissue were subjected to SDS PAGE followed by western blot with Catalog No:114145(PPP1CC antibody) at dilution of 1:500

Formulation

PBS with 0.1% sodium azide and 50% glycerol pH 7.3.



Storage

Store at -20°C. DO NOT ALIQUOT

Clonality

Polyclonal

Ig Type

Rabbit IgG

Applications

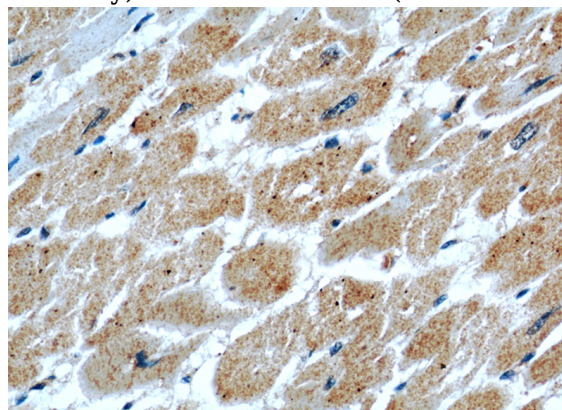
ELISA, WB, IHC, IF, IP

Dilutions

Recommended Dilution:

WB: 1:200-1:2000

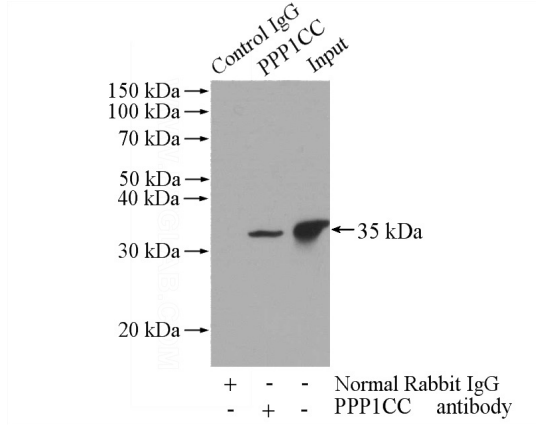
Immunohistochemical of paraffin-embedded human heart using Catalog No:114145(PPP1CC antibody) at dilution of 1:50 (under 10x lens)



PPP1CC antibody

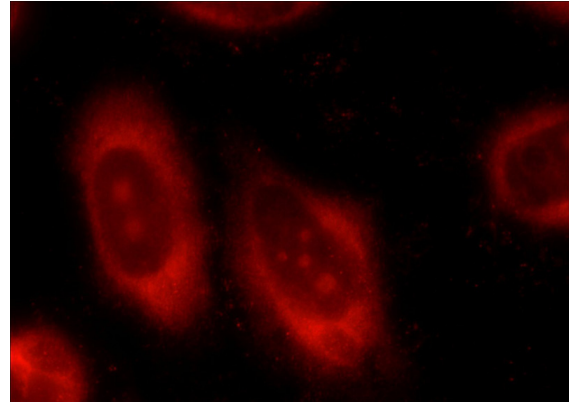
Catalog Number: 114145

Immunohistochemical of paraffin-embedded human heart using Catalog No:114145(PPP1CC antibody) at dilution of 1:50 (under 40x lens)



IP Result of anti-PPP1CC (IP:Catalog No:114145,

4ug; Detection:Catalog No:114145 1:500) with mouse brain tissue lysate 3440ug.



Immunofluorescent analysis of HeLa cells using Catalog No:114145(PPP1CC Antibody) at dilution of 1:25 and Rhodamine-Goat anti-Rabbit IgG