

# LARGE antibody



Catalog Number: 112145

## Product name

LARGE antibody

## Specificity

Human, Mouse; other species not tested.

## Antibody description

LARGE Rabbit Polyclonal antibody. Positive WB detected in mouse kidney tissue, mouse brain tissue, mouse skeletal muscle tissue, NIH/3T3 cells. Observed molecular weight by Western-blot: 65-70 kDa

## Preparation

This antibody was obtained by immunization of LARGE recombinant protein (Accession Number: NM\_001378626). Purification method: Antigen affinity purified.

## Formulation

PBS with 0.1% sodium azide and 50% glycerol pH 7.3.

## Storage

Store at -20°C. DO NOT ALIQUOT

## Clonality

Polyclonal

## Ig Type

Rabbit IgG

## Applications

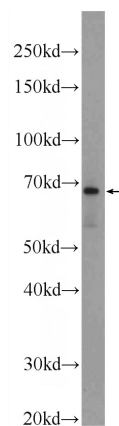
ELISA, WB

## Dilutions

Recommended Dilution:

WB: 1:500-1:5000

## Validations



mouse kidney tissue were subjected to SDS PAGE followed by western blot with Catalog No:112145(LARGE Antibody) at dilution of 1:1000