

PKA C-beta-specific antibody



Catalog Number: 113845

Product name

PKA C-beta-specific antibody

Specificity

Human, Mouse, Rat; other species not tested.

Antibody description

PKA C-beta-specific Rabbit Polyclonal antibody. Positive WB detected in mouse brain tissue, human brain tissue. Positive IHC detected in human kidney tissue. Observed molecular weight by Western-blot: 35-37kd

Preparation

This antibody was obtained by immunization of Peptide (Accession Number: NM_002731). Purification method: Antigen affinity purified.

Formulation

PBS with 0.02% sodium azide and 50% glycerol pH 7.3.

Storage

Store at -20°C. DO NOT ALIQUOT

Clonality

Polyclonal

Ig Type

Rabbit IgG

Applications

ELISA, WB, IHC

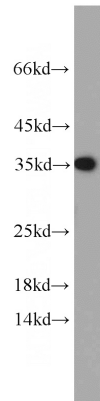
Dilutions

Recommended Dilution:

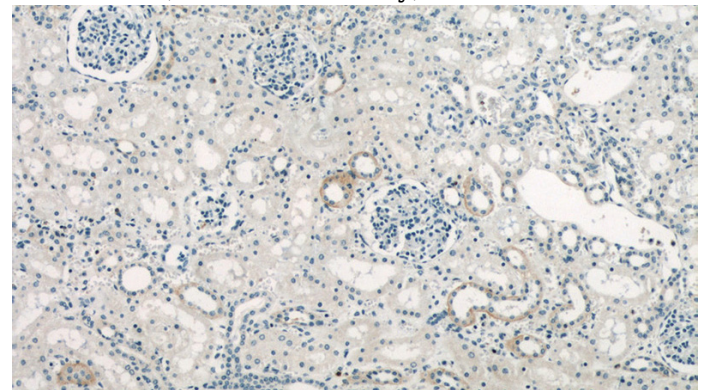
WB: 1:200-1:2000

IHC: 1:20-1:200

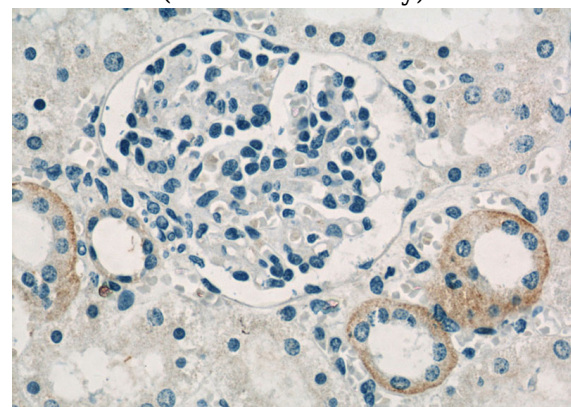
Validations



mouse brain tissue were subjected to SDS PAGE followed by western blot with Catalog No:113845(PRKACB antibody) at dilution of 1:500



Immunohistochemistry of paraffin-embedded human kidney slide using Catalog No:113845(PRKACB Antibody) at dilution of 1:50



Immunohistochemistry of paraffin-embedded human kidney slide using Catalog No:113845(PRKACB Antibody) at dilution of 1:50