

# Human SCARB1 (His & Fc Tag) recombinant protein



Catalog Number: 502445

## General Information

### Protein Construction

A DNA sequence encoding the human SCARB1 (NP\_005496.4) extracellular domain (Pro 33-Tyr 443) was fused with the C-terminal polyhistidine-tagged Fc region of human IgG1 at the C-terminus.

### Organism

Human

### Expression Host

Human Cells

## QC Testing

### Activity

1. Measured by its ability to bind recombinant mouse ApoAI in a functional ELISA.
2. Measured by its ability to bind recombinant Human ApoAI in a functional ELISA.

### Purity

> 98 % as determined by SDS-PAGE

### Endotoxin

< 1.0 EU per  $\mu\text{g}$  of the protein as determined by the LAL method

### Stability

Samples are stable for up to twelve months from date of receipt at  $-70^{\circ}\text{C}$

### Predicted N terminal

Pro 33

### Molecular Mass

The recombinant human SCARB1/Fc is a disulfide-linked homodimer. The reduced monomer consists of 659 amino acids and has a predicted molecular mass of 78 kDa. In SDS-PAGE under reducing conditions, the apparent molecular mass of rhSCARB1/Fc monomer is approximately 110-115 kDa due to glycosylation.

### Formulation

Lyophilized from sterile PBS, pH 7.4

1. 5 % trehalose and mannitol are added as protectants before lyophilization.
2. Please contact us for any concerns or special requirements.

## Usage Guide

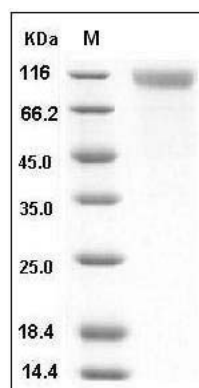
### Storage

Store it under sterile conditions at  $-20^{\circ}\text{C}$  to  $-80^{\circ}\text{C}$ . It is recommended that the protein be aliquoted for optimal storage. Avoid repeated freeze-thaw cycles.

### Reconstitution

Adding sterile water, prepare a stock solution of 0.25 mg/ml. Concentration is measured by UV-Vis.

### SDS-PAGE



Human SCARB1 / CD36L1 / CLA-1 Protein (His & Fc Tag) SDS-PAGE