

ZFYVE16 antibody



Catalog Number: 117045

Product name

ZFYVE16 antibody

Recommended Dilution:

WB: 1:500-1:5000

Specificity

Human, Mouse, Rat; other species not tested.

IP: 1:200-1:2000

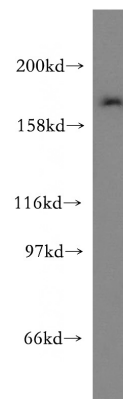
IHC: 1:20-1:200

Antibody description

ZFYVE16 Rabbit Polyclonal antibody. Positive IF detected in HeLa cells. Positive IHC detected in human kidney tissue, human heart tissue, human placenta tissue. Positive WB detected in MDA-MB-453s cells, HEK-293 cells, HeLa cells, human placenta tissue, mouse kidney tissue. Positive IP detected in HeLa cells. Observed molecular weight by Western-blot: 169 kDa, 250 kDa

IF: 1:20-1:200

Validations



MDA-MB-453s cells were subjected to SDS PAGE followed by western blot with Catalog No:117045(ZFYVE16 antibody) at dilution of

Preparation

This antibody was obtained by immunization of ZFYVE16 recombinant protein (Accession Number: BC032227). Purification method: Antigen affinity purified.

Formulation

PBS with 0.02% sodium azide and 50% glycerol pH 7.3.

Storage

Store at -20°C. DO NOT ALIQUOT

Clonality

Polyclonal

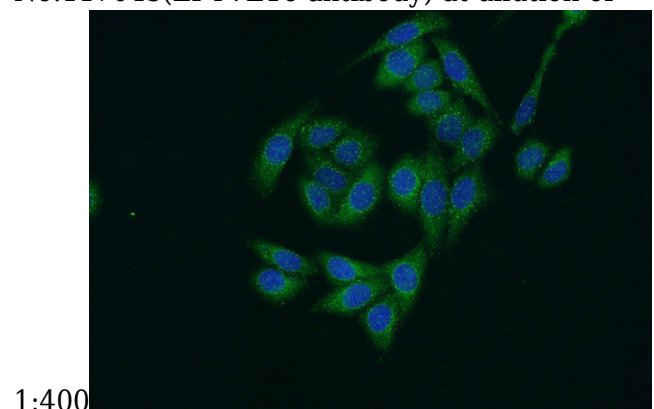
Ig Type

Rabbit IgG

Applications

ELISA, WB, IP, IHC, IF

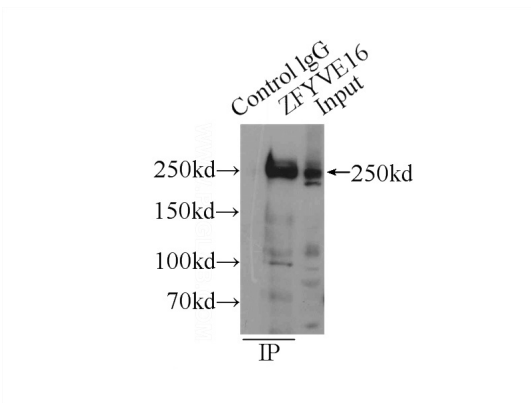
Dilutions



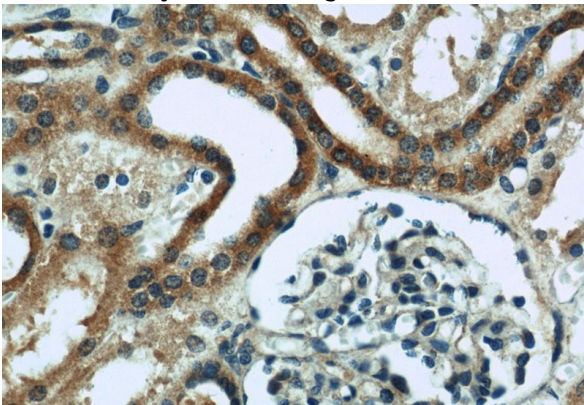
Immunofluorescent analysis of HeLa cells using Catalog No:117045(ZFYVE16 Antibody) at dilution of 1:50 and Alexa Fluor 488-conjugated AffiniPure Goat Anti-Rabbit IgG(H+L)

ZFYVE16 antibody

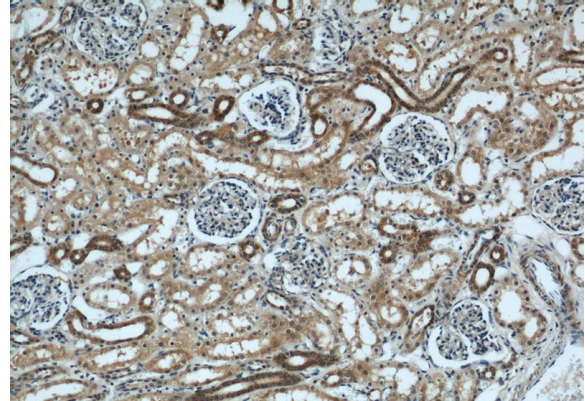
Catalog Number: 117045



IP Result of anti-ZFYVE16 (IP:Catalog No:117045, 5ug; Detection:Catalog No:117045 1:500) with HeLa cells lysate 2000ug.



Immunohistochemical of paraffin-embedded human kidney using Catalog No:117045(ZFYVE16 antibody) at dilution of 1:200 (under 40x lens)



Immunohistochemical of paraffin-embedded human kidney using Catalog No:117045(ZFYVE16 antibody) at dilution of 1:200 (under 10x lens)