

SLC25A4 antibody



Catalog Number: 115335

Product name

SLC25A4 antibody

Specificity

human, mouse, rat; other species not tested.

Antibody description

SLC25A4 Rabbit Polyclonal antibody. Positive WB detected in human heart tissue, mouse brain tissue, mouse skeletal muscle tissue. Observed molecular weight by Western-blot: 33kd

Preparation

This antibody was obtained by immunization of SLC25A4 recombinant protein (Accession Number: NM_001151). Purification method: Antigen affinity purified.

Formulation

PBS with 0.02% sodium azide and 50% glycerol pH 7.3.

Storage

Store at -20°C. DO NOT ALIQUOT

Clonality

Polyclonal

Ig Type

Rabbit IgG

Applications

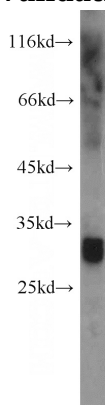
ELISA, WB

Dilutions

Recommended Dilution:

WB: 1:200-1:2000

Validations



human heart tissue were subjected to SDS PAGE followed by western blot with Catalog No:115335(SLC25A4 antibody) at dilution of 1:800