

# Anti-CoV Spike glycoprotein antibody



Catalog Number: 104335

## Product name

Anti-CoV Spike glycoprotein antibody

## Specificity

The antibody reacts with S2 subunit of MERS-CoV (NCoV / Novel coronavirus) Spike protein (S protein) and full-length S protein

## Antibody description

Rabbit polyclonal to CoV Spike glycoprotein

## Preparation

Produced in rabbits immunized with purified, a synthetic peptide corresponding to the S2 subunit of MERS-CoV (NCoV / Novel coronavirus) spike glycoprotein (S protein), and purified by antigen affinity chromatography.

## Formulation

0.2 µm filtered solution in PBS with 5% trehalose

## Storage

This antibody can be stored at 2°C-8°C for one month without detectable loss of activity. Antibody products are stable for twelve months from date of receipt when stored at -20°C to -80°C.

Preservative-Free.

Sodium azide is recommended to avoid contamination (final concentration 0.05%-0.1%). It

is toxic to cells and should be disposed of properly. Avoid repeated freeze-thaw cycles.

## Clonality

Polyclonal

## Ig Type

Rabbit IgG

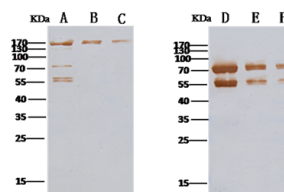
## Applications

ELISA, WB, IHC, IF, IP

## Dilutions

WB: 0.5-2 µg/mL

## Validations



Lanes	A	B	C	D	E	F
Sample (Protein)	Spike protein (BCD), aa 1-1297, Cat: 40069-V08B			Spike Protein S2 (aa 726-1296, Cat: 40070-V08B)		
Sample Volume (µg/lane)	500	100	50	500	100	50
Gel	13% SDS-PAGE reducing gel					
Recommended Concentration	1-2 µg/ml			0.5-1 µg/ml		
Secondary Antibody	Goat anti Rabbit IgG (H+L)/HRP, 0.4 µg/ml.					

Anti-Novel coronavirus (HCoV-EMC/2012) Spike Protein S2 Antibody, Rabbit PAb, Antigen Affinity Purified, Western blot