

OGG1 antibody



Catalog Number: 113335

Product name

OGG1 antibody

Recommended Dilution:

WB: 1:200-1:2000

Specificity

Human, Mouse, Rat; other species not tested.

IP: 1:200-1:2000

IHC: 1:20-1:200

Antibody description

OGG1 Rabbit Polyclonal antibody. Positive WB detected in mouse skeletal muscle tissue, HeLa cells, human heart tissue, mouse heart tissue, mouse kidney tissue, rat brain tissue, rat kidney tissue, Transfected HEK-293 cells. Positive IP detected in mouse heart tissue. Positive IHC detected in human liver tissue. Observed molecular weight by Western-blot: 47 kDa

Preparation

This antibody was obtained by immunization of OGG1 recombinant protein (Accession Number: NM_002542). Purification method: Antigen affinity purified.

Formulation

PBS with 0.02% sodium azide and 50% glycerol pH 7.3.

Storage

Store at -20°C. DO NOT ALIQUOT

Clonality

Polyclonal

Ig Type

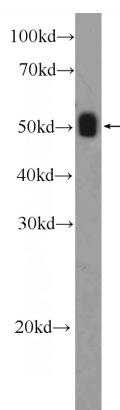
Rabbit IgG

Applications

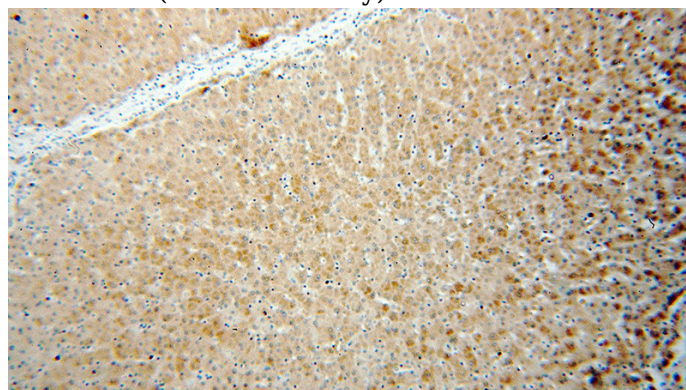
ELISA, IHC, WB, IP

Dilutions

Validations



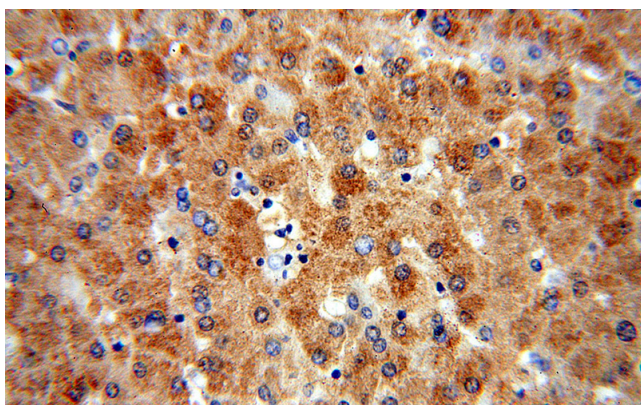
mouse skeletal muscle tissue were subjected to SDS PAGE followed by western blot with Catalog No:113335(OGG1 Antibody) at dilution of 1:600



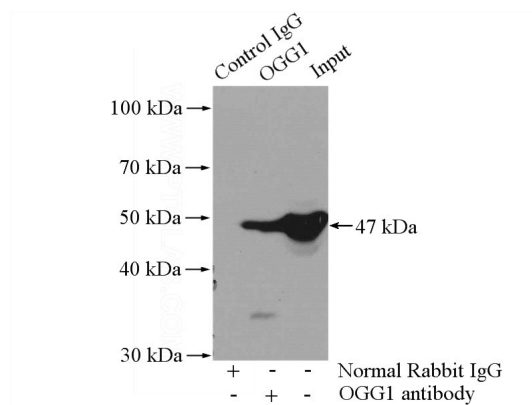
Immunohistochemical of paraffin-embedded human liver using Catalog No:113335(OGG1 antibody) at dilution of 1:100 (under 10x lens)

OGG1 antibody

Catalog Number: 113335



Immunohistochemical of paraffin-embedded human liver using Catalog No:113335(OGG1 antibody) at dilution of 1:100 (under 40x lens)



IP Result of anti-OGG1 (IP:Catalog No:113335, 4ug; Detection:Catalog No:113335 1:500) with mouse heart tissue lysate 3200ug.