

# Human NPM1/Nucleophosmin (His Tag) recombinant protein



Catalog Number: 503335

## General Information

### Gene Name Synonym

Nucleolar phosphoprotein B23; Nucleolar protein NO38; Numatrin

### Protein Construction

A DNA sequence encoding the human NPM1 isoform 1 (P06748-1) N-terminal segment (Met 9-Leu 158) was expressed, with a polyhistidine tag at the N-terminus.

### Organism

Human

### Expression Host

E. coli

## QC Testing

### Purity

> 90 % as determined by SDS-PAGE

### Endotoxin

Please contact us for more information.

### Stability

Samples are stable for up to twelve months from date of receipt at -70°C

### Predicted N terminal

Met

### Molecular Mass

The recombinant human NPM1 consisting of 161 amino acids and has a calculated molecular mass of 17.8 kDa. It migrates as an approximately 20 kDa band in SDS-PAGE under reducing conditions.

### Formulation

Lyophilized from sterile PBS, pH 6.0

1. 5 % trehalose and mannitol are added as protectants before lyophilization.

2. Please contact us for any concerns or special requirements.

## Usage Guide

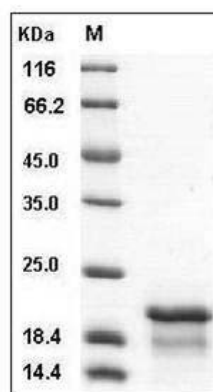
### Storage

Store it under sterile conditions at -20°C to -80°C. It is recommended that the protein be aliquoted for optimal storage. Avoid repeated freeze-thaw cycles.

### Reconstitution

Adding sterile water, prepare a stock solution of 0.25 mg/ml. Concentration is measured by UV-Vis.

### SDS-PAGE



Human NPM1 / Nucleophosmin Protein (His Tag)  
SDS-PAGE