

Anti-Beta-Actin antibody

Catalog Number: 103335

Product name

Anti-Beta-Actin antibody

Specificity

Human Beta-Actin

Antibody description

Rabbit polyclonal to Beta-Actin

Preparation

Produced in rabbits immunized with purified, a synthetic peptide corresponding to the C-terminus of the human beta actin, and purified by antigen affinity chromatography.

Formulation

0.2 µm filtered solution in PBS, pH7.4

Storage

This antibody can be stored at 2°C-8°C for one month without detectable loss of activity. Antibody products are stable for twelve months from date of receipt when stored at -20°C to -80°C.

Preservative-Free.

Sodium azide is recommended to avoid contamination (final concentration 0.05%-0.1%). It is toxic to cells and should be disposed of properly. Avoid repeated freeze-thaw cycles.

Clonality

Polyclonal

Ig Type

Rabbit IgG

Applications

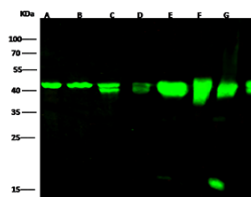
WB, IHC-P

Dilutions

WB: 0.5-5 µg/ml

IHC-P: 0.5-5 µg/mL

Validations



Lanes	A	B	C	D	E	F	G	H
Items	HepG2	Jurkat	MCF7	Mouse liver tissue lysate	Mouse brain tissue lysate	Rabbit brain tissue lysate	Rabbit spleen tissue lysate	Rat brain tissue lysate
Sample Volume (µg/lane)	30	30	30	30	30	30	30	30
Recommended Concentration	13% SDS-PAGE reducing gel							
Secondary Antibody	0.5-5 µg/ml							
Explanation	DyLight 800-labeled Antibody To Rabbit IgG (H+L), at 1:5000 dilution. Developed using Odyssey imaging system.							
Explanation	Predicted band size : 42 kDa Observed band size : 42 kDa Additional bands at : 15 kDa (We are unsure as to the identity of these extra bands.)							

Beta-Actin Antibody, Rabbit PAb, Antigen Affinity Purified □ Western Blot