

C10orf68 antibody

Catalog Number: 108635

Product name

C10orf68 antibody

IHC: 1:20-1:200

IF: 1:10-1:100

Specificity

Human, Monkey; other species not tested.

Antibody description

C10orf68 Rabbit Polyclonal antibody. Positive IF detected in HEK-293 cells. Positive IHC detected in human cervical cancer tissue, human colon cancer tissue, human colon tissue. Positive WB detected in A549 cells, COS-7 cells. Observed molecular weight by Western-blot: 65 kDa

Preparation

This antibody was obtained by immunization of C10orf68 recombinant protein (Accession Number: BC125091). Purification method: Antigen affinity purified.

Formulation

PBS with 0.1% sodium azide and 50% glycerol pH 7.3.

Storage

Store at -20°C. DO NOT ALIQUOT

Clonality

Polyclonal

Ig Type

Rabbit IgG

Applications

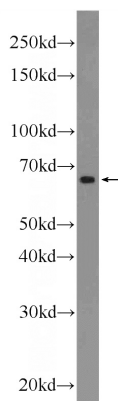
ELISA, WB, IF, IHC

Dilutions

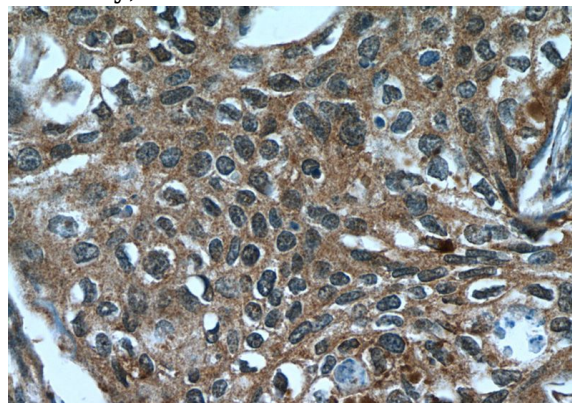
Recommended Dilution:

WB: 1:200-1:2000

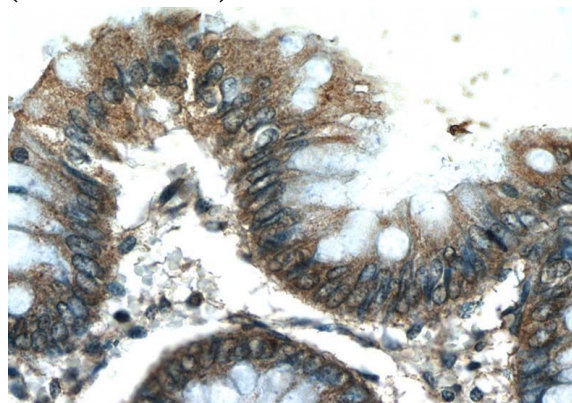
Validations



A549 cells were subjected to SDS PAGE followed by western blot with Catalog No:108635(C10orf68 Antibody) at dilution of 1:600



Immunohistochemistry of paraffin-embedded human cervical cancer tissue slide using Catalog No:108635(C10orf68 Antibody) at dilution of 1:50 (under 40x lens)

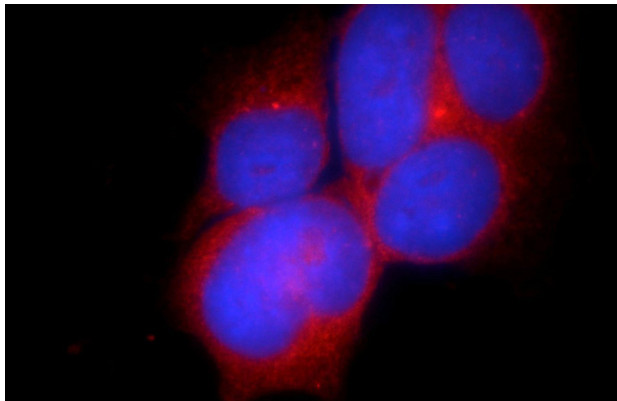


Immunohistochemistry of paraffin-embedded

C10orf68 antibody

Catalog Number: 108635

human colon tissue slide using Catalog No:108635(C10orf68 Antibody) at dilution of 1:50 (under 40x lens)



Immunofluorescent analysis of HEK-293 cells using Catalog No:108635(C10orf68 Antibody) at dilution of 1:25 and Rhodamine-Goat anti-Rabbit IgG