

Anti-phospho-PKC (Ser660) Rabbit antibody



Catalog Number: 167635

Product name

Anti-phospho-PKC (Ser660) Rabbit antibody

Specificity

Human, Mouse, Rat

Antibody description

phospho-PKC (Ser660) Rabbit monoclonal antibody

Preparation

Antigen: A synthetic phosphopeptide corresponding to residues surrounding Ser660 of human PKC

Formulation

50nM Tris-Glycine(pH 7.4), 0.15M NaCl, 40%Glycerol, 0.01% sodium azide and 0.05% BSA

Storage

Store at 4°C short term. Store at -20°C long term. Avoid freeze / thaw cycle.

Clonality

Monoclonal

Ig Type

Rabbit IgG

Applications

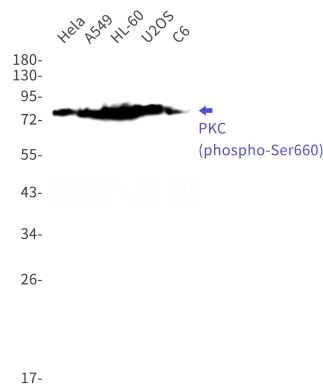
WB, IHC-P

Dilutions

WB: 1/2000-1/10000

IHC: 1/50

Validations



Western blot detection of PKC (phospho-Ser660) in HeLa,A549,HL-60,U2OS,C6 cell lysates using PKC (phospho-Ser660) Rabbit mAb(1:1000 diluted).Predicted band size:78kDa.Observed band size:78-85kDa.