

# HSD17B1 Polyclonal Antibody



Catalog Number: 160635

## Product name

HSD17B1 Polyclonal Antibody

## Specificity

Human, Mouse, Rat

## Antibody description

Polyclonal antibody to HSD17B1

## Preparation

Antigen: Recombinant fusion protein containing a sequence corresponding to amino acids 1-328 of human HSD17B1 (NP\_000404.2).

## Formulation

PBS with 0.02% sodium azide, 50% glycerol, pH7.3.

## Storage

Store at -20°C. Avoid freeze / thaw cycles.

## Clonality

Polyclonal

## Ig Type

Rabbit IgG

## Applications

WB, IHC, IF

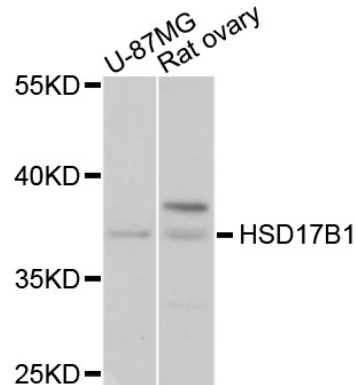
## Dilutions

WB 1:500 - 1:2000

IHC 1:50 - 1:200

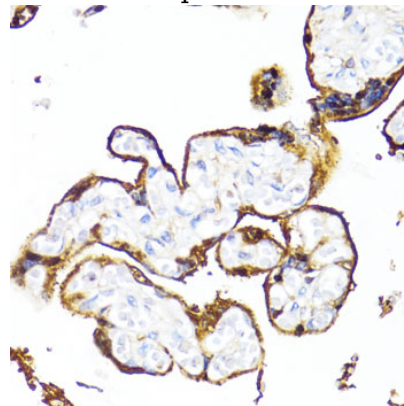
IF 1:50 - 1:200

## Validations



Western blot - HSD17B1 Polyclonal Antibody

Western blot analysis of extracts of various cell lines, using HSD17B1 antibody at 1:1000 dilution. Secondary antibody: HRP Goat Anti-Rabbit IgG (H+L) at 1:10000 dilution. Lysates/proteins: 25ug per lane. Blocking buffer: 3% nonfat dry milk in TBST. Detection: ECL Basic Kit. Exposure time: 5s.



Immunohistochemistry - HSD17B1 Polyclonal Antibody

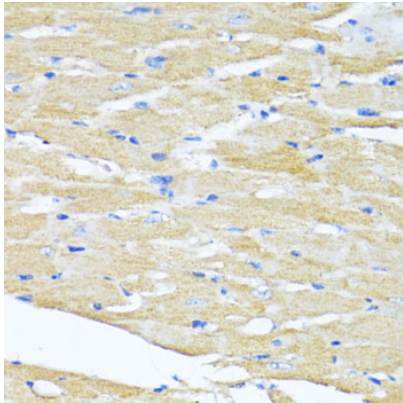
Immunohistochemistry of paraffin-embedded human placenta using HSD17B1 antibody at dilution of 1:100 (40x lens).

# HSD17B1 Polyclonal Antibody



Catalog Number: 160635

---



Immunohistochemistry - HSD17B1 Polyclonal Antibody

Immunohistochemistry of paraffin-embedded mouse heart using HSD17B1 antibody at dilution of 1:100 (40x lens).