

SIP1 antibody

Catalog Number: 115235

Product name

SIP1 antibody

Specificity

Human, Mouse, Rat; other species not tested.

Antibody description

SIP1 Rabbit Polyclonal antibody. Positive IP detected in HepG2 cells. Positive WB detected in HepG2 cells, HeLa cells, rat brain tissue. Observed molecular weight by Western-blot: 32-35 kDa

Preparation

This antibody was obtained by immunization of SIP1 recombinant protein (Accession Number: BC104968). Purification method: Antigen affinity purified.

Formulation

PBS with 0.02% sodium azide and 50% glycerol pH 7.3.

Storage

Store at -20°C. DO NOT ALIQUOT

Clonality

Polyclonal

Ig Type

Rabbit IgG

Applications

ELISA, WB, IP

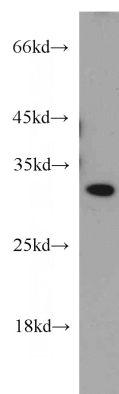
Dilutions

Recommended Dilution:

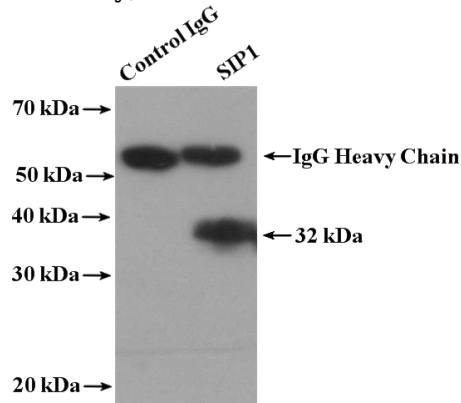
WB: 1:500-1:5000

IP: 1:200-1:2000

Validations



HepG2 cells were subjected to SDS PAGE followed by western blot with Catalog No:115235(SIP1 antibody) at dilution of 1:500



IP Result of anti-SIP1 (IP:Catalog No:115235, 4ug; Detection:Catalog No:115235 1:500) with HepG2 cells lysate 1000ug.