

UBE2O Polyclonal Antibody



Catalog Number: 160235

Product name

UBE2O Polyclonal Antibody

Specificity

Human, Mouse, Rat

Antibody description

Polyclonal antibody to UBE2O

Preparation

Antigen: Recombinant fusion protein containing a sequence corresponding to amino acids 1073-1292 of human UBE2O (NP_071349.3).

Formulation

PBS with 0.02% sodium azide, 50% glycerol, pH7.3.

Storage

Store at -20°C. Avoid freeze / thaw cycles.

Clonality

Polyclonal

Ig Type

Rabbit IgG

Applications

WB, IF, IP

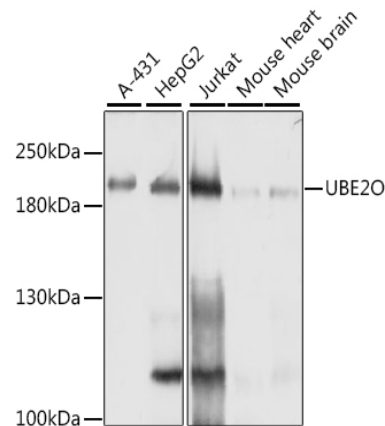
Dilutions

WB 1:1000 - 1:4000

IF 1:50 - 1:200

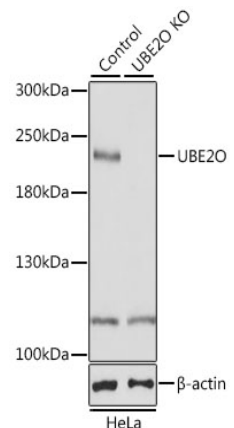
IP 1:50 - 1:200

Validations



Western blot - UBE2O Polyclonal Antibody

Western blot analysis of extracts of various cell lines, using UBE2O antibody at 1:1000 dilution. Secondary antibody: HRP Goat Anti-Rabbit IgG (H+L) at 1:10000 dilution. Lysates/proteins: 25ug per lane. Blocking buffer: 3% nonfat dry milk in TBST. Detection: ECL



Basic Kit .Exposure time: 1s.

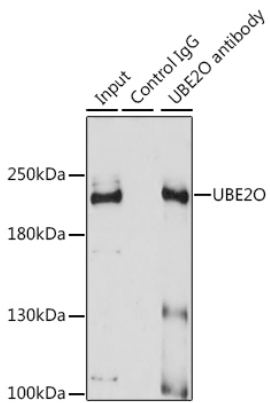
Western blot - UBE2O Polyclonal Antibody

Western blot analysis of extracts from normal (control) and UBE2O knockout HeLa cells, using UBE2O antibody at 1:1000 dilution. Secondary antibody: HRP Goat Anti-Rabbit IgG (H+L) at 1:10000 dilution. Lysates/proteins: 25ug per lane. Blocking buffer: 3% nonfat dry milk in TBST. Detection: ECL Basic Kit .Exposure time: 5s. CRISPR KO cell lines generated by

UBE2O Polyclonal Antibody



Catalog Number: 160235



Immunoprecipitation - UBE2O Polyclonal Antibody

Immunoprecipitation analysis of 200ug extracts of A-431 cells using 3ug UBE2O antibody . Western blot was performed from the immunoprecipitate using UBE2O antibody at a dilution of 1:1000.