

# Anti-PAK1 Rabbit antibody



Catalog Number: 166935

## Product name

Anti-PAK1 Rabbit antibody

## Specificity

Human, Mouse, Rat

## Antibody description

PAK1 Rabbit polyclonal antibody

## Preparation

Antigen: A synthetic peptide of human PAK1

## Formulation

Supplied in 50nM Tris-Glycine(pH 7.4), 0.15M NaCl, 40%Glycerol, 0.01% sodium azide and 0.05% BSA.

## Storage

Store at -20°C. Stable for 12 months from date of receipt.

## Clonality

Polyclonal

## Ig Type

Rabbit IgG

## Applications

WB, ICC/IF, FC, IP

## Dilutions

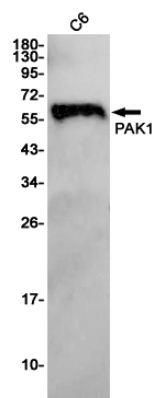
WB: 1/1000

ICC/IF: 1/20

FC: 1/20

IP: 1/20

## Validations



Western blot detection of PAK1 in C6 cell lysates using PAK1 Rabbit pAb(1:1000 diluted). Predicted band size:61KDa. Observed band size:61KDa.