

Anti-PPM1A/PP2CA antibody



Catalog Number: 102935

Product name

Anti-PPM1A/PP2CA antibody

Immunogen

[Mouse PPM1A/PP2CA \(His Tag\) recombinant protein](#)

Specificity

Mouse PPM1A / PP2C-alpha

Antibody description

Rabbit polyclonal to PPM1A/PP2CA

Preparation

Produced in rabbits immunized with purified, recombinant Mouse PPM1A (rM PPM1A; NP_032936.1; Met 1-Trp 382). PPM1A specific IgG was purified by mouse PPM1A affinity chromatography

Formulation

0.2 μ m filtered solution in PBS with 5% trehalose

Storage

This antibody can be stored at 2°C-8°C for one month without detectable loss of activity. Antibody products are stable for twelve months from date of receipt when stored at -20°C to -80°C.

Preservative-Free.

Sodium azide is recommended to avoid contamination (final concentration 0.05%-0.1%). It is toxic to cells and should be disposed of properly. Avoid repeated freeze-thaw cycles.

Clonality

Polyclonal

Ig Type

Rabbit IgG

Applications

ELISA, WB, IP

Dilutions

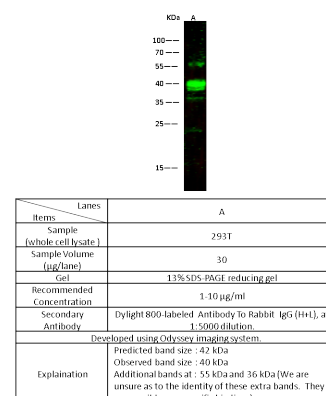
WB: 1-10 μ g/mL

ELISA: 0.1-0.2 μ g/mL

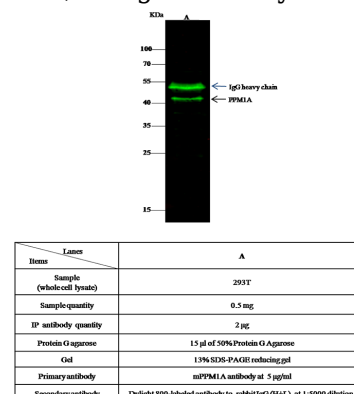
This antibody can be used at 0.1-0.2 μ g/mL with the appropriate secondary reagents to detect Mouse PPM1A. The detection limit for Mouse PPM1A is approximately 0.00245 ng/well.

IP: 4-6 μ g/mg of lysate

Validations



PPM1A / PP2CA / PP2C-alpha Antibody, Rabbit PAb, Antigen Affinity Purified, Western blot



PPM1A / PP2CA / PP2C-alpha Antibody, Rabbit PAb, Antigen Affinity Purified