

Anti-SBDS antibody



Catalog Number: 142935

Product name

Anti-SBDS antibody

Immunogen

[Human SBDS / Shwachman-Bodian-Diamond syndrome \(His Tag\) recombinant protein](#)

Specificity

Human SBDS / Shwachman-Bodian-Diamond syndrome

Antibody description

Rabbit Polyclonal to Human SBDS

Preparation

Produced in rabbits immunized with purified, recombinant Human SBDS / Shwachman-Bodian-Diamond syndrome . SBDS / Shwachman-Bodian-Diamond syndrome specific IgG was purified by Human SBDS / Shwachman-Bodian-Diamond syndrome affinity chromatography.

Formulation

0.2 µm filtered solution in PBS

Storage

This antibody can be stored at 2°C-8°C for one month without detectable loss of activity. Antibody products are stable for twelve months from date of receipt when stored at -20°C to -80°C.

Preservative-Free.

Sodium azide is recommended to avoid contamination (final concentration 0.05%-0.1%). It is toxic to cells and should be disposed of properly. Avoid repeated freeze-thaw cycles.

Clonality

Polyclonal

Ig Type

Rabbit IgG

Applications

WB, ELISA, ICC/IF, IF, IP

Dilutions

WB: 5-20 µg/ml

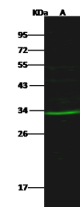
ELISA: 0.1-0.2 µg/mL

This antibody can be used at 0.1-0.2 µg/mL with the appropriate secondary reagents to detect Human SBDS / Shwachman-Bodian-Diamond syndrome.

ICC/IF: 1-5µg/mL

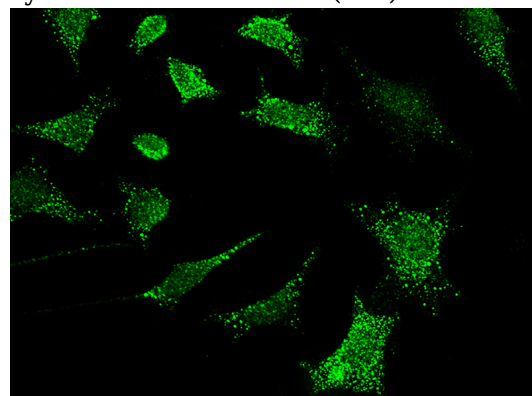
IP: 4-8 uL/mg of lysate

Validations



Lanes	A
Items	
Sample (whole cell lysate)	HepG2
Sample Volume (µg/lane)	30
Gel	13% SDS-PAGE reducing gel
Recommended Concentration	5-20 µg/ml
Secondary Antibody	Dylight 800 labeled Antibody to Rabbit IgG (H+L), at 1:5000 dilution.
Developed using Odyssey imaging system.	
Explanation	Predicted band size : 29 kDa Observed band size : 32 kDa

Human SBDS / Shwachman-Bodian-Diamond syndrome Western blot (WB) 15660



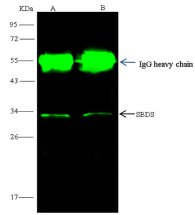
Human SBDS / Shwachman-Bodian-Diamond

Anti-SBDS antibody



Catalog Number: 142935

syndrome Immunofluorescence(IF) 15661



Human SBDS / Shwachman-Bodian-Diamond syndrome Immunoprecipitation(IP) 15662

Lanes	A	B
Sample	HepG2	Jurkat
Sample quantity (whole cell lysate)	0.5 mg	
IP antibody quantity	4 µL	
Protein G agarose	15 µl of 50% Protein G Agarose	
Gel	13% SDS-PAGE reducing gel	
Primary antibody	His-SBDS antibody at 10 µg/ml	
Secondary antibody	Dylight 800-labeled antibody to rabbit IgG (H+L), at 1:5000 dilution	