

# GEFT-Specific antibody

Catalog Number: 110935

## Product name

GEFT-Specific antibody

IP: 1:500-1:5000

IHC: 1:20-1:200

## Specificity

Human,Mouse,Rat; other species not tested.

## Antibody description

GEFT-Specific Rabbit Polyclonal antibody. Positive WB detected in mouse skeletal muscle tissue, HEK-293 cells, mouse heart tissue, mouse liver tissue. Positive IP detected in mouse brain tissue. Positive IHC detected in human pancreas tissue, human skeletal muscle tissue. Observed molecular weight by Western-blot: 64 kDa

## Preparation

This antibody was obtained by immunization of Peptide (Accession Number: NM\_182947). Purification method: Antigen affinity purified.

## Formulation

PBS with 0.02% sodium azide and 50% glycerol pH 7.3.

## Storage

Store at -20°C. DO NOT ALIQUOT

## Clonality

Polyclonal

## Ig Type

Rabbit IgG

## Applications

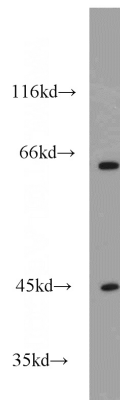
ELISA, WB, IHC, IP

## Dilutions

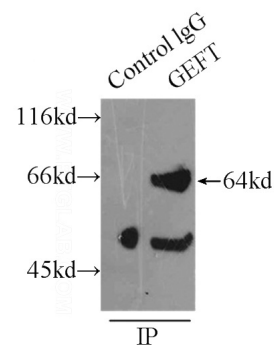
Recommended Dilution:

WB: 1:500-1:5000

## Validations

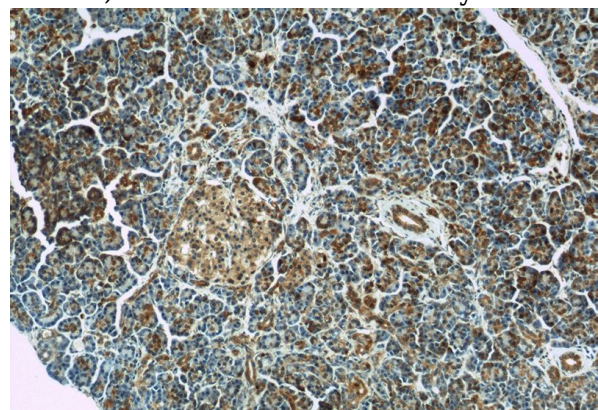


mouse skeletal muscle tissue were subjected to SDS PAGE followed by western blot with Catalog No:110935(GEFT-Specific antibody) at dilution of



1:1500

IP Result of anti-GEFT-Specific (IP:Catalog No:110935, 4ug; Detection:Catalog No:110935 1:1500) with mouse brain tissue lysate 8000ug.



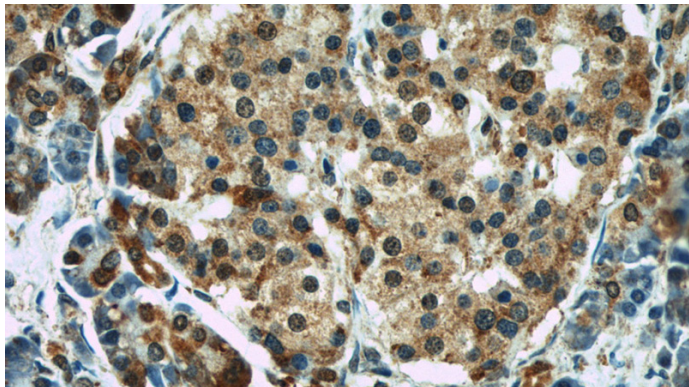
Immunohistochemistry of paraffin-embedded

# GEFT-Specific antibody

Catalog Number: 110935

---

human pancreas slide using Catalog  
No:110935(GEFT-Specific Antibody) at dilution of  
1:100



Immunohistochemistry of paraffin-embedded  
human pancreas slide using Catalog  
No:110935(GEFT-Specific Antibody) at dilution of  
1:100