

# UBE2S antibody



Catalog Number: 116535

## Product name

UBE2S antibody

## Specificity

Human, Mouse, Rat; other species not tested.

## Antibody description

UBE2S Rabbit Polyclonal antibody. Positive IP detected in A2780 cells. Positive WB detected in MDA-MB-453s cells, A2780 cells, human liver tissue, MCF7 cells, mouse liver tissue, mouse ovary tissue. Positive FC detected in Jurkat cells. Positive IHC detected in human breast cancer tissue, human ovary tumor tissue, human skin tissue. Observed molecular weight by Western blot: 28 kDa

## Preparation

This antibody was obtained by immunization of UBE2S recombinant protein (Accession Number: NM\_014501). Purification method: Antigen affinity purified.

## Formulation

PBS with 0.02% sodium azide and 50% glycerol pH 7.3.

## Storage

Store at -20°C. DO NOT ALIQUOT

## Clonality

Polyclonal

## Ig Type

Rabbit IgG

## Applications

ELISA, WB, IHC, FC, IP

## Dilutions

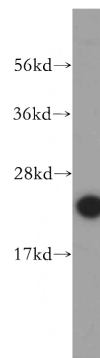
Recommended Dilution:

WB: 1:200-1:2000

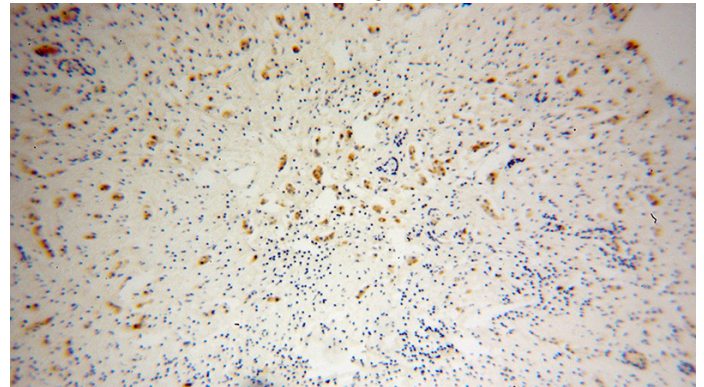
IP: 1:500-1:5000

IHC: 1:20-1:200

## Validations



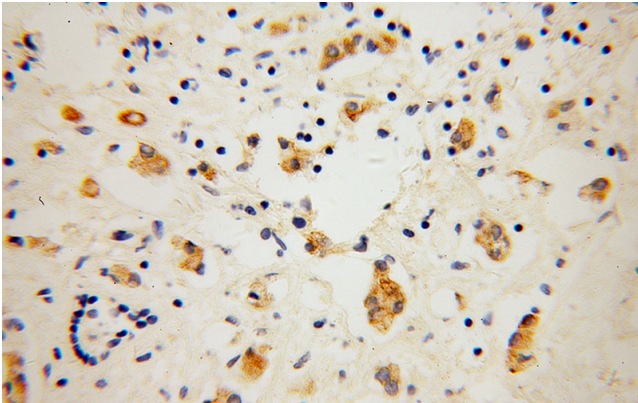
MDA-MB-453s cells were subjected to SDS PAGE followed by western blot with Catalog No:116535(UBE2S antibody) at dilution of 1:500



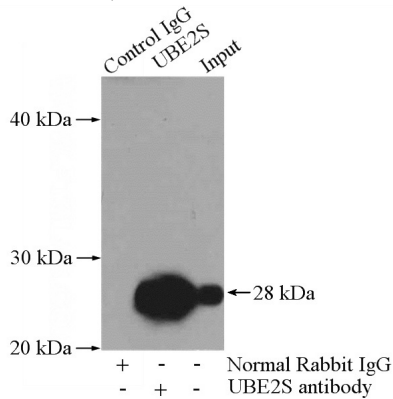
Immunohistochemical of paraffin-embedded human breast cancer using Catalog No:116535(UBE2S antibody) at dilution of 1:50 (under 10x lens)

# UBE2S antibody

Catalog Number: 116535

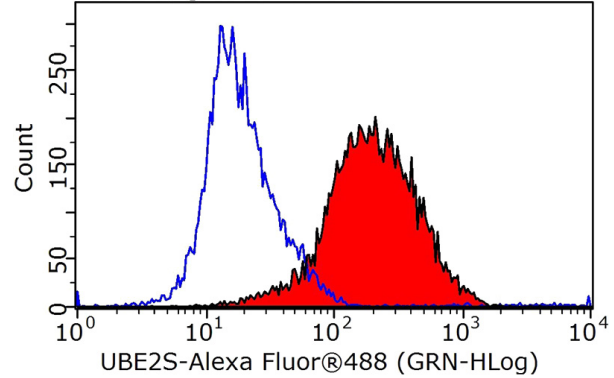


Immunohistochemical of paraffin-embedded human breast cancer using Catalog No:116535(UBE2S antibody) at dilution of 1:50 (under 40x lens)



IP Result of anti-UBE2S (IP:Catalog No:116535, 4ug; Detection:Catalog No:116535 1:1000) with A2780 cells lysate 960ug.

Plot P03, gated on P01.R1



1X10<sup>6</sup> Jurkat cells were stained with 0.5ug UBE2S antibody (Catalog No:116535, red) and control antibody (blue). Fixed with 90% MeOH blocked with 3% BSA (30 min). Alexa Fluor 488-conjugated AffiniPure Goat Anti-Rabbit IgG(H+L) with dilution 1:1000.