

p15 INK4b antibody

Catalog Number: 113535

Product name

p15 INK4b antibody

WB: 1:200-1:2000

IP: 1:200-1:2000

Specificity

Human, Mouse, Rat; other species not tested.

IHC: 1:20-1:200

IF: 1:10-1:100

Antibody description

p15 INK4b Rabbit Polyclonal antibody. Positive IHC detected in human ovary tumor tissue, human breast cancer tissue, human colon cancer tissue. Positive IF detected in HeLa cells. Positive WB detected in HeLa cells, HEK-293. Positive IP detected in HEK-293 cells. Observed molecular weight by Western-blot: 15 kDa

Validations

Preparation

This antibody was obtained by immunization of p15 INK4b recombinant protein (Accession Number: NM_004936). Purification method: Antigen affinity purified.

Formulation

PBS with 0.1% sodium azide and 50% glycerol pH 7.3.

Storage

Store at -20°C. DO NOT ALIQUOT

Clonality

Polyclonal

Ig Type

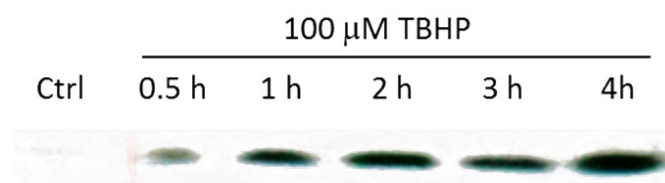
Rabbit IgG

Applications

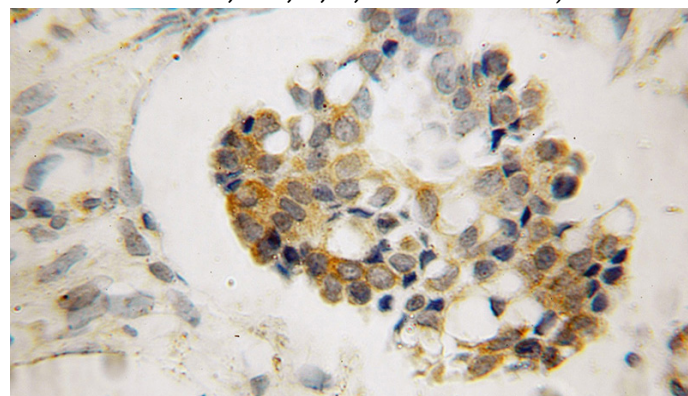
ELISA, IHC, IF, IP, WB

Dilutions

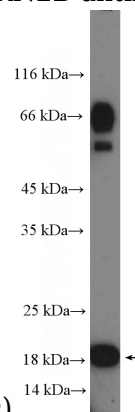
Recommended Dilution:



WB result of p15 antibody with HEK293 (treated with TBHP for 0, 0.5, 1, 2, 3 and 4 hours).



Immunohistochemical of paraffin-embedded human ovary tumor using Catalog No:113535(CDKN2B antibody) at dilution of 1:100

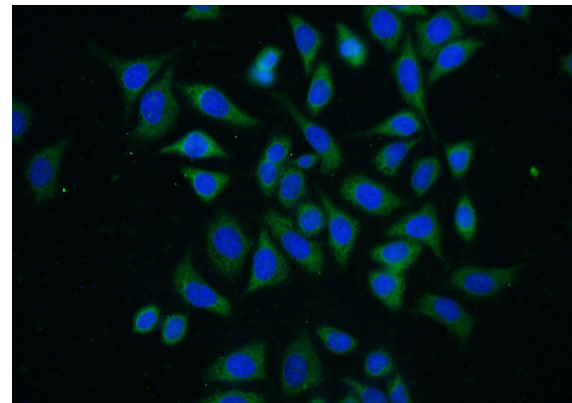
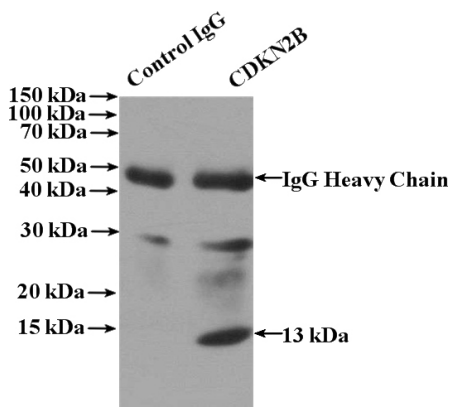


(under 25x lens)

HeLa cells were subjected to SDS PAGE followed by western blot with Catalog No:113535(CDKN2B Antibody) at dilution of 1:600

p15 INK4b antibody

Catalog Number: 113535



IP Result of anti-CDKN2B (IP:Catalog No:113535, 4ug; Detection:Catalog No:113535 1:600) with HEK-293 cells lysate 2800ug.

Immunofluorescent analysis of (-20oc Ethanol) fixed HeLa cells using Catalog No:113535(CDKN2B Antibody) at dilution of 1:25 and Alexa Fluor 488-conjugated AffiniPure Goat Anti-Rabbit IgG(H+L)