

# Anti-SLM-1 Mouse antibody



Catalog Number: 169135

## Product name

Anti-SLM-1 Mouse antibody

## Specificity

Human, Mouse

## Antibody description

SLM-1 Mouse monoclonal antibody

## Preparation

Antigen: Purified recombinant fragment of human KHDRBS2 (AA: 160-349) expressed in E. Coli.

## Formulation

Purified antibody in PBS with 0.05% sodium azide.

## Storage

Store at 4°C short term. Store at -20°C long term.  
Avoid freeze / thaw cycle.

## Clonality

Monoclonal

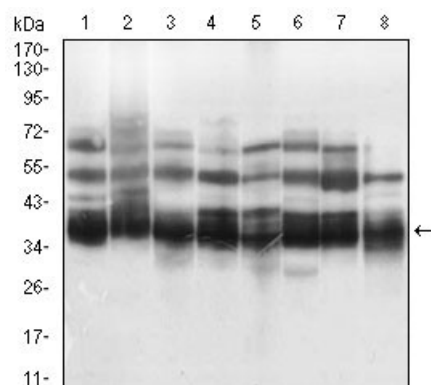
## Ig Type

Mouse IgG1

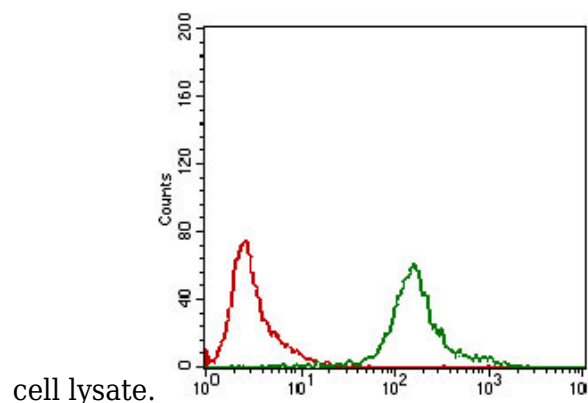
## Applications

WB, FC

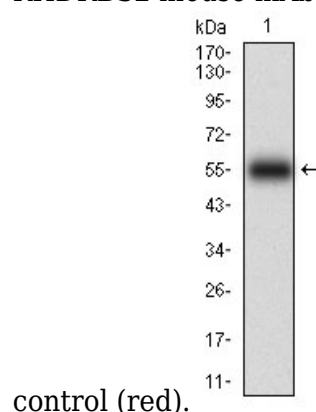
## Validations



Western blot analysis using KHDRBS2 mouse mAb against K562 (1), HEK293 (2), NTERA-2 (3), Hela (4), HepG2 (5), Jurkat (6), A431 (7), NIH/3T3 (8)



Flow cytometric analysis of K562 cells using KHDRBS2 mouse mAb (green) and negative control (red).



Western blot analysis using KHDRBS2 mAb against human KHDRBS2 (AA