

Human C19ORF10 / SF20 (Fc Tag) recombinant protein



Catalog Number: 500135

General Information

Gene Name Synonym

Interleukin-25; Stromal cell-derived growth factor SF20

Protein Construction

A DNA sequence encoding the human C19orf10 (NP_061980.1) (Met1-Leu173) was expressed with the Fc region of mouse IgG1 at the C-terminus.

Organism

Human

Expression Host

Human Cells

QC Testing

Purity

> 90 % as determined by SDS-PAGE.

Endotoxin

< 1.0 EU per μg protein as determined by the LAL method.

Stability

Samples are stable for up to twelve months from date of receipt at -70°C

Predicted N terminal

Val 32

Molecular Mass

The recombinant human C19orf10 consists 376 amino acids and predicts a molecular mass of 42.2 kDa.

Formulation

Lyophilized from sterile PBS, pH 7.4.

1. 5 % trehalose and mannitol are added as protectants before lyophilization.

2. Please contact us for any concerns or special requirements.

Usage Guide

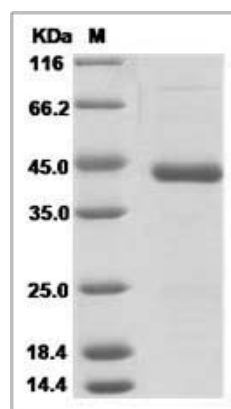
Storage

Store it under sterile conditions at -20°C to -80°C . It is recommended that the protein be aliquoted for optimal storage. Avoid repeated freeze-thaw cycles.

Reconstitution

Adding sterile water, prepare a stock solution of 0.25 mg/ml. Concentration is measured by UV-Vis.

SDS-PAGE



Human C19ORF10 / SF20 Protein (Fc Tag)