

# Anti-HP1 gamma/CBX3 Rabbit antibody



Catalog Number: 168835

## Product name

Anti-HP1 gamma/CBX3 Rabbit antibody

## Specificity

Human, Mouse, Rat

## Antibody description

HP1 gamma/CBX3 Rabbit monoclonal antibody

## Preparation

Antigen: A synthetic peptide of human HP1 gamma

## Formulation

50nM Tris-Glycine(pH 7.4), 0.15M NaCl, 40%Glycerol, 0.01% sodium azide and 0.05% BSA.

## Storage

Store at 4°C short term. Store at -20°C long term. Avoid freeze / thaw cycle.

## Clonality

Monoclonal

## Ig Type

Rabbit IgG

## Applications

WB, IHC-P, FC, IP

## Dilutions

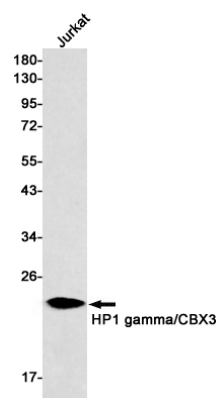
WB: 1/1000

IHC: 1/20

FC: 1/20-1/100

IP: 1/20

## Validations



Western blot detection of HP1 gamma/CBX3 in Jurkat cell lysates using HP1 gamma/CBX3 Rabbit mAb(1:500 diluted).Predicted band size:21kDa.Observed band size:21kDa.