

Anti-PFKL Rabbit antibody



Catalog Number: 166835

Product name

Rabbit IgG

Anti-PFKL Rabbit antibody

Applications

Specificity

WB, ICC/IF, FC

Human, Mouse, Rat

Dilutions

Antibody description

WB: 1/1000

PFKL Rabbit polyclonal antibody

ICC/IF: 1/20

Preparation

FC: 1/20

Antigen: A synthetic peptide of human PFKL

Formulation

Supplied in 50nM Tris-Glycine(pH 7.4), 0.15M NaCl, 40%Glycerol, 0.01% sodium azide and 0.05% BSA.

Storage

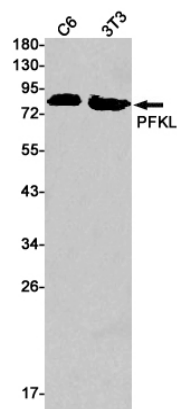
Store at -20°C. Stable for 12 months from date of receipt.

Clonality

Polyclonal

Ig Type

Validations



Western blot detection of PFKL in C6,3T3 cell lysates using PFKL Rabbit pAb(1:1000 diluted).Predicted band size:85kDa.Observed band size:85kDa.