

RPS24 antibody



Catalog Number: 114835

Product name

RPS24 antibody

Specificity

Human, Mouse, Rat; other species not tested.

Antibody description

RPS24 Rabbit Polyclonal antibody. Positive WB detected in SH-SY5Y cells, HEK-293 cells, HL-60 cells. Positive IF detected in SH-SY5Y cells. Observed molecular weight by Western-blot: 18 kDa

Preparation

This antibody was obtained by immunization of RPS24 recombinant protein (Accession Number: NM_033022). Purification method: Antigen affinity purified.

Formulation

PBS with 0.1% sodium azide and 50% glycerol pH 7.3.

Storage

Store at -20°C. DO NOT ALIQUOT

Clonality

Polyclonal

Ig Type

Rabbit IgG

Applications

ELISA, WB, IF

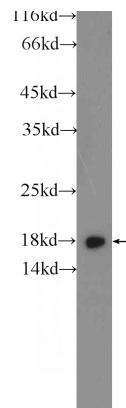
Dilutions

Recommended Dilution:

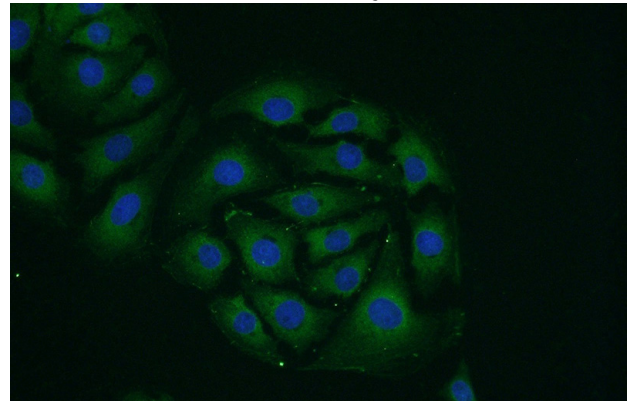
WB: 1:200-1:1000

IF: 1:20-1:200

Validations



SH-SY5Y cells were subjected to SDS PAGE followed by western blot with Catalog No:114835(RPS24 Antibody) at dilution of 1:300



Immunofluorescent analysis of SH-SY5Y cells using Catalog No:114835(RPS24 Antibody) at dilution of 1:50 and Alexa Fluor 488-conjugated AffiniPure Goat Anti-Rabbit IgG(H+L)