

Anti-SELPLG antibody



Catalog Number: 142835

Product name

Anti-SELPLG antibody

Immunogen

[Mouse PSGL-1/CD162 recombinant protein](#)

Specificity

Mouse PSGL-1/CD162

Antibody description

Rabbit Monoclonal to Mouse SELPLG

Preparation

This antibody was obtained from a rabbit immunized with purified, recombinant Mouse PSGL-1/CD162 .

Formulation

0.2 µm filtered solution in PBS

Storage

This antibody can be stored at 2°C-8°C for one month without detectable loss of activity. Antibody products are stable for twelve months from date of receipt when stored at -20°C to -80°C. Preservative-Free.

Preservative-Free.

Sodium azide is recommended to avoid

contamination (final concentration 0.05%-0.1%). It is toxic to cells and should be disposed of properly. Avoid repeated freeze-thaw cycles.

Clonality

Monoclonal

Ig Type

Rabbit IgG

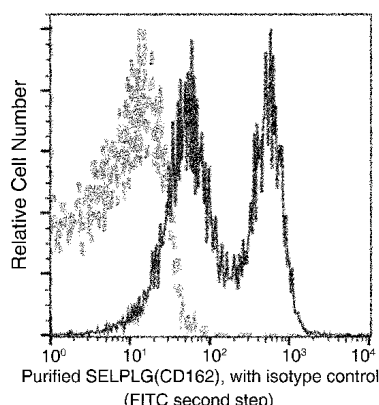
Applications

FCM

Dilutions

FCM: 0.5-2 µg/test

Validations



Mouse PSGL-1/CD162 Flow Cytometry (FC) 15778