

Anti-Tissue Factor Rabbit antibody



Catalog Number: 167435

Product name

Rabbit IgG

Anti-Tissue Factor Rabbit antibody

Applications

Specificity

WB, IHC-P, ICC/IF

Human, Mouse, Rat

Dilutions

Antibody description

WB: 1/1000-1/2000

Tissue Factor Rabbit polyclonal antibody

IHC: 1/50-1/200

Preparation

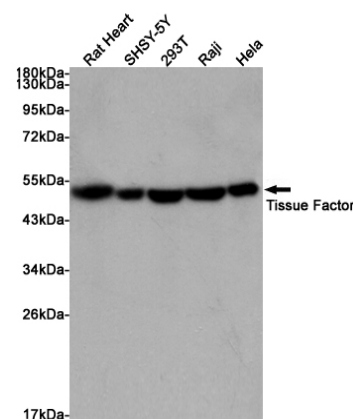
ICC/IF: 1/50-1/200

Antigen: A synthesized peptide derived from human Tissue Factor

Validations

Formulation

Rabbit IgG in phosphate buffered saline , pH 7.4, 150mM NaCl, 0.02% sodium azide and 50% glycerol.



Storage

Store at 4°C short term. Store at -20°C long term. Avoid freeze / thaw cycle.

Clonality

Polyclonal

Ig Type

Western blot analysis of extracts from rat heart, SHSY-5Y, 293T, Raji and Hela cells using Tissue Factor Rabbit pAb at 1:1000 dilution. Predicted band size: 47kDa. Observed band size: 47kDa.