

Anti-ITGAD antibody



Catalog Number: 176435

Product name

WB, IHC-P

Anti-ITGAD antibody

Dilutions

Specificity

WB: 1:500-1:2000

Human

IHC-P: 1:100-1:300

Antibody description

Rabbit polyclonal antibody to ITGAD

Preparation

This antigen of this antibody was the antiserum was produced against synthesized peptide derived from the internal region of human itgad. aa range:901-950

Formulation

Liquid, Liquid in PBS containing 50% glycerol, 0.5% BSA and 0.02% sodium azide.

Storage

Store at +4°C after thawing. Aliquot store at -20°C or -80°C. Avoid repeated freeze / thaw cycles.

Clonality

Polyclonal

Ig Type

Rabbit IgG

Applications

Validations

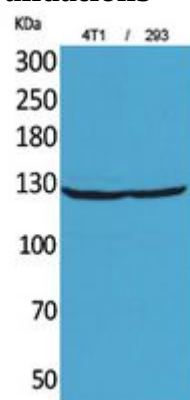
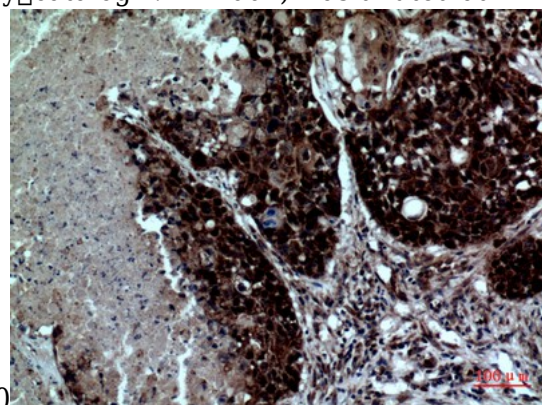


Fig1:: Western Blot analysis of 4T1, 293 cells using Integrin α D Polyclonal Antibody.. Secondary antibody (catalog#: HA1001) was diluted at



1:20000

Fig2:: Immunohistochemical analysis of paraffin-embedded human-lung, antibody was diluted at 1:100