

# RAB37 antibody

Catalog Number: 114435

## Product name

RAB37 antibody

## Specificity

Human, Mouse, Rat; other species not tested.

## Antibody description

RAB37 Rabbit Polyclonal antibody. Positive IHC detected in mouse spleen tissue. Positive WB detected in Sp2/0 cells. Positive IP detected in Sp2/0 cells. Observed molecular weight by Western-blot: 34 kDa, 25 kDa

## Preparation

This antibody was obtained by immunization of RAB37 recombinant protein (Accession Number: NM\_001006638). Purification method: Antigen affinity purified.

## Formulation

PBS with 0.02% sodium azide and 50% glycerol pH 7.3.

## Storage

Store at -20°C. DO NOT ALIQUOT

## Clonality

Polyclonal

## Ig Type

Rabbit IgG

## Applications

ELISA, WB, IHC, IP

## Dilutions

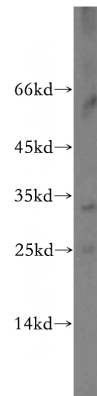
Recommended Dilution:

WB: 1:200-1:1000

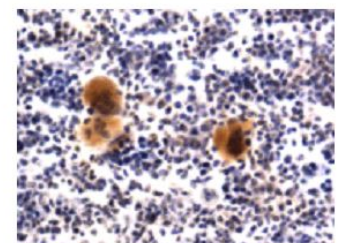
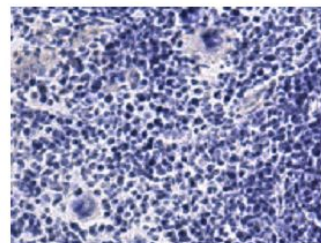
IP: 1:200-1:1000

IHC: 1:20-1:200

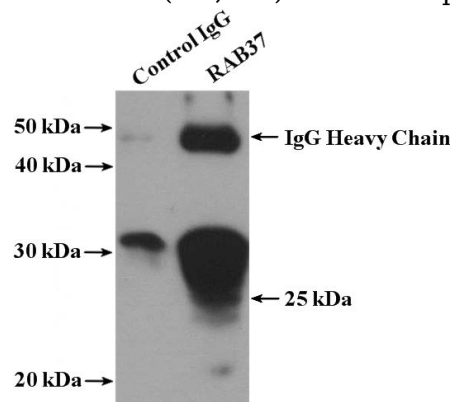
## Validations



Sp2/0 cells were subjected to SDS PAGE followed by western blot with Catalog No:114435(RAB37 antibody) at dilution of 1:100



IHC result from Barry Bradford of Catalog No:114435(1:1,000) in Mouse Spleen.



IP Result of anti-RAB37 (IP:Catalog No:114435, 4ug; Detection:Catalog No:114435 1:300) with Sp2/0 cells lysate 2400ug.