

HLX antibody

Catalog Number: 111435

Product name

HLX antibody

Specificity

Human, Mouse, Rat; other species not tested.

Antibody description

HLX Rabbit Polyclonal antibody. Positive IHC detected in human endometrial cancer tissue. Positive WB detected in human placenta tissue. Observed molecular weight by Western-blot: 50 kDa

Preparation

This antibody was obtained by immunization of HLX recombinant protein (Accession Number: NM_021958). Purification method: Antigen affinity purified.

Formulation

PBS with 0.02% sodium azide and 50% glycerol pH 7.3.

Storage

Store at -20°C. DO NOT ALIQUOT

Clonality

Polyclonal

Ig Type

Rabbit IgG

Applications

ELISA, WB, IHC

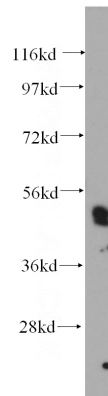
Dilutions

Recommended Dilution:

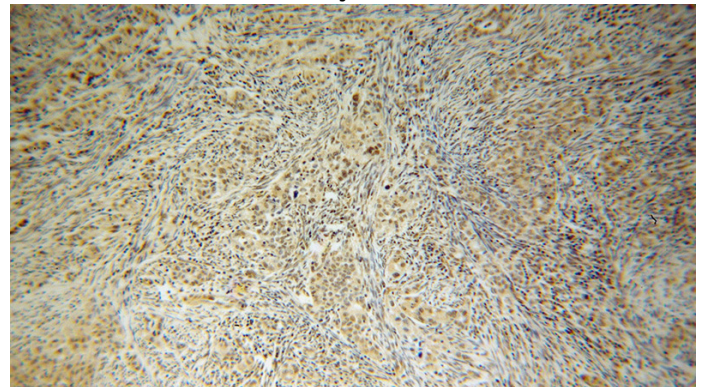
WB: 1:200-1:2000

IHC: 1:20-1:200

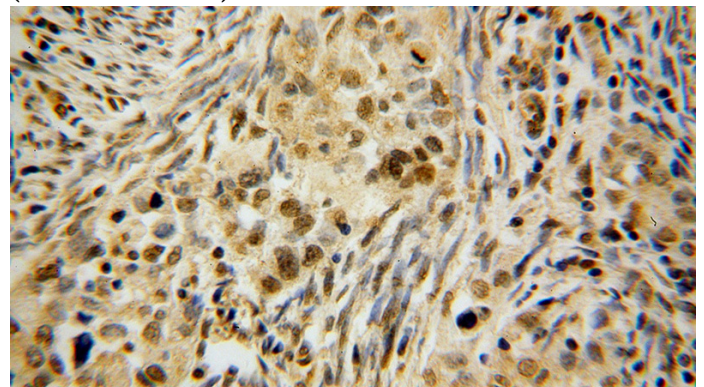
Validations



human placenta tissue were subjected to SDS PAGE followed by western blot with Catalog No:111435(HLX antibody) at dilution of 1:500



Immunohistochemical of paraffin-embedded human endometrial cancer using Catalog No:111435(HLX antibody) at dilution of 1:100 (under 10x lens)



Immunohistochemical of paraffin-embedded human endometrial cancer using Catalog No:111435(HLX antibody) at dilution of 1:100

HLX antibody



Catalog Number: 111435

(under 40x lens)