

# Mouse CSRP1 (His Tag) recombinant protein



Catalog Number: 501435

## General Information

### Gene Name Synonym

Cysteine-rich protein 1

### Protein Construction

A DNA sequence encoding the mouse CSRP1 (P97315) (Met 1-Glu 193) was expressed, with a polyhistidine tag at the C-terminus.

### Organism

Mouse

### Expression Host

E. coli

## QC Testing

### Purity

> 95 % as determined by SDS-PAGE

### Endotoxin

Please contact us for more information.

### Stability

Samples are stable for up to twelve months from date of receipt at -70°C

### Predicted N terminal

Met

### Molecular Mass

The recombinant mouse CSRP1 consisting of 203 amino acids and has a calculated molecular mass

of 22 kDa. rm CSRP1 migrates as an approximately 23 kDa band in SDS-PAGE under reducing conditions.

### Formulation

Lyophilized from sterile PBS, pH 7.4

1. 5 % trehalose and mannitol are added as protectants before lyophilization.

2. Please contact us for any concerns or special requirements.

## Usage Guide

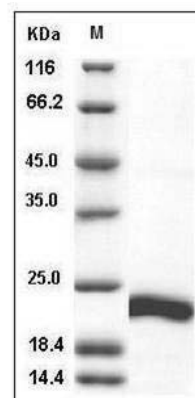
### Storage

Store it under sterile conditions at -20°C to -80°C. It is recommended that the protein be aliquoted for optimal storage. Avoid repeated freeze-thaw cycles.

### Reconstitution

Adding sterile water, prepare a stock solution of 0.25 mg/ml. Concentration is measured by UV-Vis.

### SDS-PAGE



Mouse CSRP1 / CSRP / CRP1 Protein (His Tag)  
SDS-PAGE