

# Human FSH Beta / FSHB (His Tag) recombinant protein



Catalog Number: 500435

## General Information

### Gene Name Synonym

Follicle-stimulating hormone beta subunit;  
Follitropin beta chain

### Protein Construction

A DNA sequence encoding the human FSHB (NP\_000501.1) (Met1-Glu129) was expressed with a polyhistidine tag at the C-terminus.

### Organism

Human

### Expression Host

Human Cells

## QC Testing

### Purity

> 90 % as determined by SDS-PAGE.

### Endotoxin

< 1.0 EU per  $\mu\text{g}$  protein as determined by the LAL method.

### Stability

Samples are stable for up to twelve months from date of receipt at  $-70^{\circ}\text{C}$

### Predicted N terminal

Asn 19

### Molecular Mass

The recombinant human FSHB consists 122 amino acids and predicts a molecular mass of 13.9 kDa.

### Formulation

Lyophilized from sterile PBS, pH 7.4.

1. 5 % trehalose and mannitol are added as protectants before lyophilization.

2. Please contact us for any concerns or special requirements.

## Usage Guide

### Storage

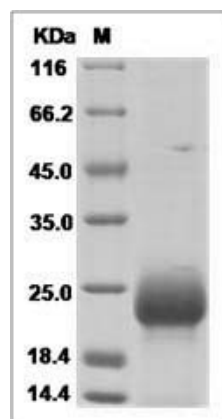
Store it under sterile conditions at  $-20^{\circ}\text{C}$  to  $-80^{\circ}\text{C}$ .

It is recommended that the protein be aliquoted for optimal storage. Avoid repeated freeze-thaw cycles.

### Reconstitution

Adding sterile water, prepare a stock solution of 0.25 mg/ml. Concentration is measured by UV-Vis.

### SDS-PAGE



Human FSH Beta / FSHB Protein (His Tag)