

# Anti-IL-15 / IL15 / Interleukin 15 antibody



Catalog Number: 100435

## Product name

Anti-IL-15 / IL15 / Interleukin 15 antibody

## Specificity

mouse IL15

## Antibody description

Rabbit polyclonal to IL-15 / IL15 / Interleukin 15

## Preparation

Produced in rabbits immunized with A synthetic peptide corresponding to the center region of the mouse mIL15 , and purified by antigen affinity chromatography.

## Formulation

0.2 µm filtered solution in PBS

## Storage

This antibody can be stored at 2°C-8°C for one month without detectable loss of activity. Antibody products are stable for twelve months from date of receipt when stored at -20°C to -80°C.

Preservative-Free.

Sodium azide is recommended to avoid contamination (final concentration 0.05%-0.1%). It is toxic to cells and should be disposed of

properly. Avoid repeated freeze-thaw cycles.

## Clonality

Polyclonal

## Ig Type

Rabbit IgG

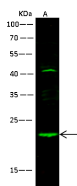
## Applications

WB

## Dilutions

WB: 5-10 µg/ml

## Validations



Items	Lanes	A
Sample (whole cell lysate)		RAW264.7
Sample Volume (µg/lane)		30
Gel		13% SDS-PAGE reducing gel
Recommended Concentration		5-10 µg/ml
Secondary Antibody		Dylight 800 labeled Antibody to Rabbit IgG (H+L) at 1:5000 dilution.
Explanation		Developed using Odyssey imaging system. Predicted band size : 18 kDa Observed band size : 22 kDa Additional bands at : 42 kDa (We are unsure as to the identity of these extra bands. They are possible non-specific bindings).

IL15 Antibody, Rabbit PAb, Antigen Affinity Purified, Western blot