

Anti-PLSCR3 Rabbit antibody



Catalog Number: 169035

Product name

Anti-PLSCR3 Rabbit antibody

Specificity

Human, Mouse, Rat

Antibody description

PLSCR3 Rabbit monoclonal antibody

Preparation

Antigen: A synthetic peptide of human PLSCR3

Formulation

Supplied in 50nM Tris-Glycine(pH 7.4), 0.15M NaCl, 40%Glycerol, 0.01% sodium azide and 0.05% BSA.

Storage

Store at 4°C short term. Aliquot and store at -20°C long term. Avoid freeze / thaw cycle.

Clonality

Monoclonal

Ig Type

Rabbit IgG

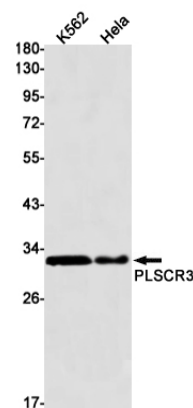
Applications

WB

Dilutions

1:1000-1:5000

Validations



Western blot detection of PLSCR3 in K562, HeLa cell lysates using PLSCR3 Rabbit mAb(1:1000 diluted). Predicted band size: 32kDa. Observed band size: 32kDa.