

## General Information

### Protein Construction

A DNA sequence encoding the human TXNDC16 (NP\_065835.2) 476-825 aa was fused with the polyhistidine tag

### Organism

Human

### Expression Host

E. coli

## QC Testing

### Activity

Not tested.

### Endotoxin

Please contact the lab for more information.

### Stability

Aliquot and store at  $-20^{\circ}\text{C}$  to  $-80^{\circ}\text{C}$  for up to 6 months. Avoid freeze thaw cycles.

### Formulation

1M PBS (58 mM  $\text{Na}_2\text{HPO}_4$ , 17 mM  $\text{NaH}_2\text{PO}_4$ , 68 mM  $\text{NaCl}$ , pH8.0 ), added with 300 mM Imidazole and 0.7% sarcosyl, 15% glycerol.

## Usage Guide

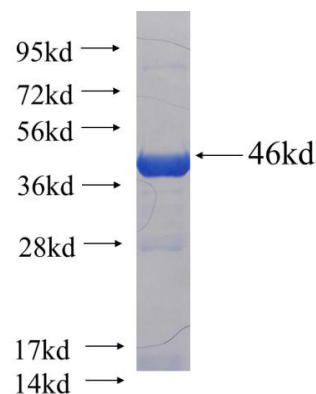
## Storage

Store it under sterile conditions at  $-20^{\circ}\text{C}$  to  $-80^{\circ}\text{C}$ . It is recommended that the protein be aliquoted for optimal storage. Avoid repeated freeze-thaw cycles.

## Reconstitution

Reconstitute at  $0.25\ \mu\text{g}/\mu\text{l}$  in sterile water for short-term storage. Reconstitution with 50% glycerol solution is recommended for longer term storage (see Stability and Storage for more details). If a different concentration is needed for your purposes please adjust the reconstitution volume as required (please note: the ion concentration of the final solution will vary according to the volume used). Note: Centrifuge vial before opening. When reconstituting, gently pipet and wash down the sides of the vial to ensure full recovery of the protein into solution.

## SDS-PAGE



Recombinant human TXNDC16 SDS-PAGE