

# POLR1C antibody



Catalog Number: 114035

## Product name

POLR1C antibody

## Specificity

Human, Mouse, Rat; other species not tested.

## Antibody description

POLR1C Rabbit Polyclonal antibody. Positive IHC detected in human ovary tissue, human heart tissue, human kidney tissue, human liver tissue, human placenta tissue, human skin tissue, human spleen tissue, human testis tissue. Positive WB detected in HEK-293 cells, BxPC-3 cells, K-562 cells, SW 1990 cells. Observed molecular weight by Western-blot: 39kd

## Preparation

This antibody was obtained by immunization of POLR1C recombinant protein (Accession Number: NM\_203290). Purification method: Antigen affinity purified.

## Formulation

PBS with 0.02% sodium azide and 50% glycerol pH 7.3.

## Storage

Store at -20°C. DO NOT ALIQUOT

## Clonality

Polyclonal

## Ig Type

Rabbit IgG

## Applications

ELISA, WB, IHC

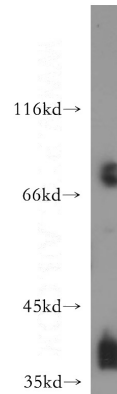
## Dilutions

Recommended Dilution:

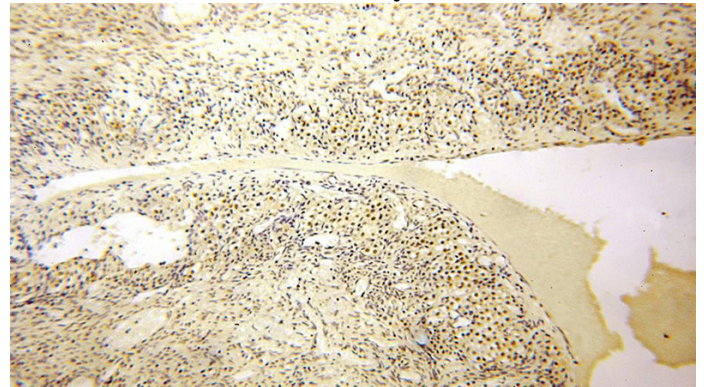
WB: 1:200-1:2000

IHC: 1:20-1:200

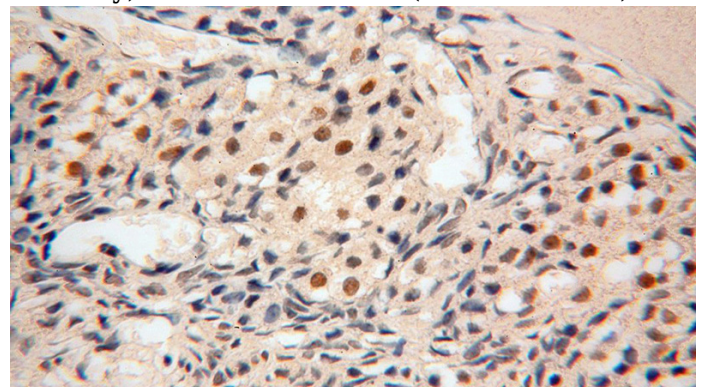
## Validations



HEK-293 cells were subjected to SDS PAGE followed by western blot with Catalog No:114035(POLR1C antibody) at dilution of 1:800



Immunohistochemical of paraffin-embedded human ovary using Catalog No:114035(POLR1C antibody) at dilution of 1:200 (under 10x lens)



Immunohistochemical of paraffin-embedded

# POLR1C antibody



Catalog Number: 114035

---

human ovary using Catalog No:114035(POLR1C antibody) at dilution of 1:200 (under 40x lens)