

## General Information

### Protein Construction

A DNA sequence encoding the rhesus IFNG (NP\_001028077.1) (Gln24-Gln165) was expressed and purified with an initial Met.

### Organism

Rhesus

### Expression Host

E. coli

## QC Testing

### Activity

Measured by its binding ability in a functional ELISA.

Immobilized Rhesus IFNG (cat#90008-CNAE) at 10 µg/ml (100 µl/well) can bind Rhesus IFNGR1-Fc (Cat:502969). The EC<sub>50</sub> of Rhesus IFNGR1-Fc (Cat:502969) is 20.28-47.32 ng/ml.

### Purity

> 90 % as determined by SDS-PAGE

### Endotoxin

Please contact us for more information.

### Stability

Samples are stable for up to twelve months from date of receipt at -70°C

### Predicted N terminal

Met

## Molecular Mass

The recombinant rhesus IFNG consists of 143 amino acids and has a calculated molecular mass of 16.9 kDa.

## Formulation

Lyophilized from sterile PBS, pH 7.4.

1. 5 % trehalose and mannitol are added as protectants before lyophilization.
2. Please contact us for any concerns or special requirements.

## Usage Guide

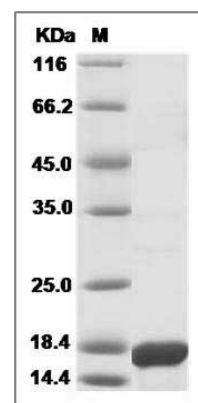
### Storage

Store it under sterile conditions at -20°C to -80°C. It is recommended that the protein be aliquoted for optimal storage. Avoid repeated freeze-thaw cycles.

## Reconstitution

Adding sterile water, prepare a stock solution of 0.25 mg/ml. Concentration is measured by UV-Vis.

## SDS-PAGE



Cynomolgus / Rhesus IFNG / Interferon Gamma Protein SDS-PAGE