

GLRX2 antibody



Catalog Number: 111035

Product name

GLRX2 antibody

Specificity

Human, Mouse, Rat; other species not tested.

Antibody description

GLRX2 Rabbit Polyclonal antibody. Positive IF detected in A549 cells. Positive WB detected in A549 cells, human heart tissue, mouse heart tissue. Observed molecular weight by Western-blot: 16 kDa

Preparation

This antibody was obtained by immunization of GLRX2 recombinant protein (Accession Number: NM_001243399). Purification method: Antigen affinity purified.

Formulation

PBS with 0.02% sodium azide and 50% glycerol pH 7.3.

Storage

Store at -20°C. DO NOT ALIQUOT

Clonality

Polyclonal

Ig Type

Rabbit IgG

Applications

ELISA, WB, IF

Dilutions

Recommended Dilution:

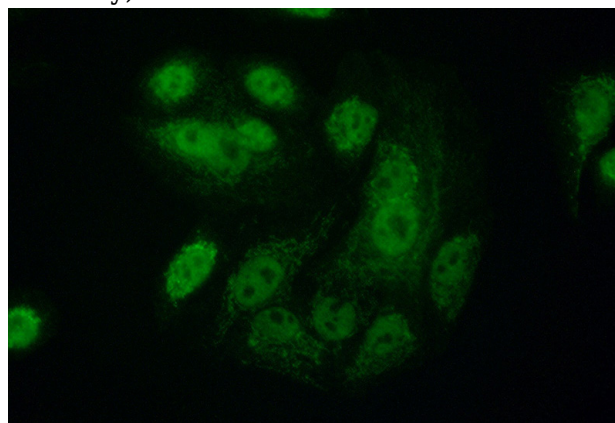
WB: 1:200-1:1000

IF: 1:50-1:500

Validations



A549 cells were subjected to SDS PAGE followed by western blot with Catalog No:111035(GLRX2 antibody) at dilution of 1:200



Immunofluorescent analysis of (10% Formaldehyde) fixed A549 cells using Catalog No:111035(GLRX2 Antibody) at dilution of 1:50 and Alexa Fluor 488-conjugated AffiniPure Goat Anti-Rabbit IgG(H+L)