

# Anti-TIPRL antibody



Catalog Number: 175725

## Product name

Anti-TIPRL antibody

## Specificity

Human, Mouse, Rat, Dog, Pig, Cow, Horse, Rabbit, Guinea Pig

## Antibody description

Rabbit polyclonal antibody to TIPRL

## Preparation

This antigen of this antibody was klh conjugated synthetic peptide derived from human tiprl 51-150/272

## Formulation

Liquid, Preservative: 15mM Sodium Azide, Constituents: 1% BSA, 0.01M PBS, pH 7.4

## Storage

Store at -20°C for one year. Avoid repeated freeze/thaw cycles. The lyophilized antibody is stable at room temperature for at least one month and for greater than a year when kept at -20°C. When reconstituted in sterile pH 7.4 0.01M PBS or diluent of antibody the antibody is stable for at least two weeks at 2-4°C.

## Clonality

Polyclonal

## Ig Type

Rabbit IgG

## Applications

WB

## Dilutions

WB:1:500-2000

## Validations

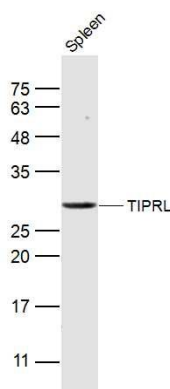


Fig1: Sample: Spleen (Mouse) Lysate at 40 ug; Primary: Anti-TIPRL at 1/300 dilution; Secondary: IRDye800CW Goat Anti-Rabbit IgG at 1/20000 dilution; Predicted band size: 31 kD; Observed band size: 31 kD