

# RNase T2 antibody



Catalog Number: 114725

## Product name

RNase T2 antibody

IP: 1:200-1:1000

IHC: 1:20-1:200

## Specificity

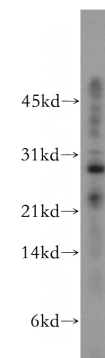
Human, Mouse; other species not tested.

IF: 1:20-1:200

## Antibody description

RNase T2 Rabbit Polyclonal antibody. Positive WB detected in HEK-293 cells, mouse pancreas tissue. Positive IP detected in BxPC-3 cells. Positive IHC detected in human pancreas cancer tissue. Positive IF detected in transfected cells. Observed molecular weight by Western-blot: 29 kDa

## Validations



## Preparation

This antibody was obtained by immunization of RNase T2 recombinant protein (Accession Number: NM\_003730). Purification method: Antigen affinity purified.

HEK-293 cells were subjected to SDS PAGE followed by western blot with Catalog No:114725(RNASET2 antibody) at dilution of 1:500

## Formulation

PBS with 0.02% sodium azide and 50% glycerol pH 7.3.

## Storage

Store at -20°C. DO NOT ALIQUOT

## Clonality

Polyclonal

## Ig Type

Rabbit IgG

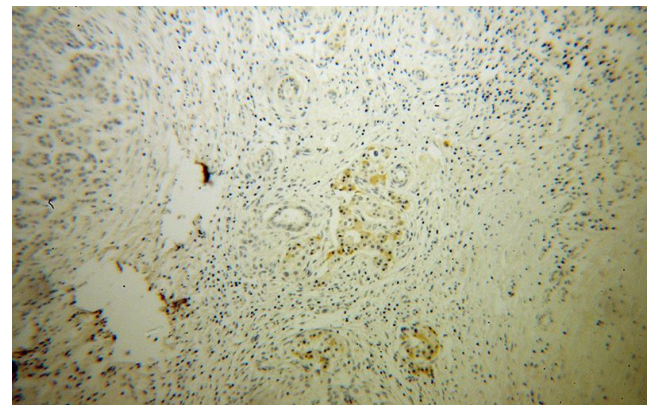
## Applications

ELISA, IHC, IF, WB, IP

## Dilutions

Recommended Dilution:

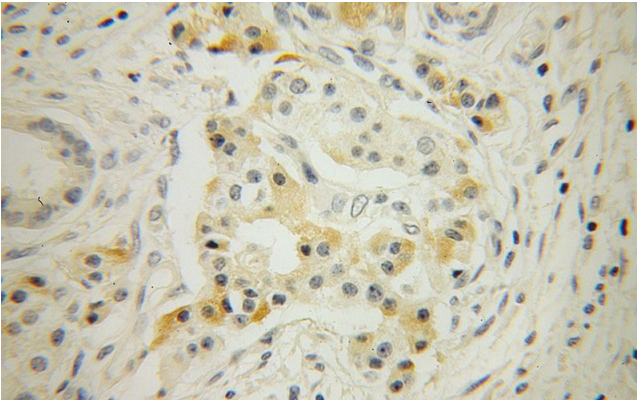
WB: 1:200-1:2000



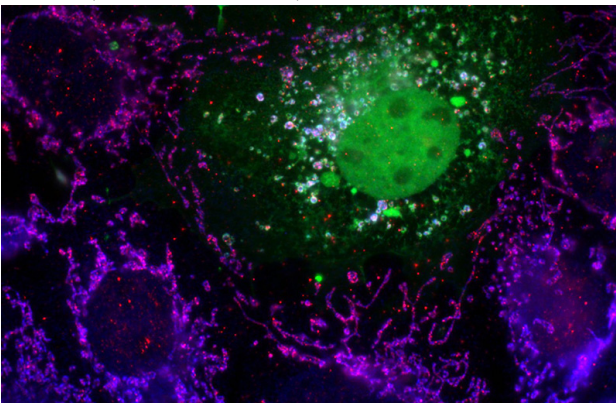
Immunohistochemical of paraffin-embedded human pancreas cancer using Catalog No:114725(RNASET2 antibody) at dilution of 1:100 (under 10x lens)

# RNase T2 antibody

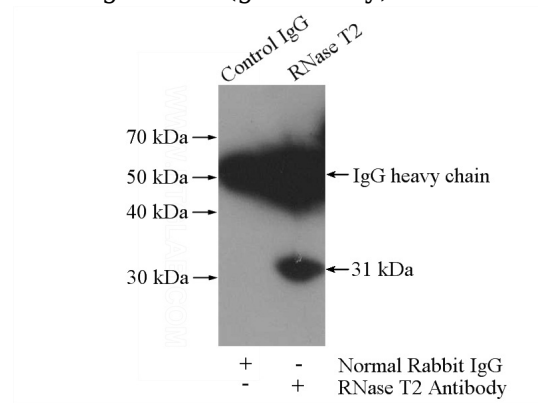
Catalog Number: 114725



Immunohistochemical of paraffin-embedded human pancreas cancer using Catalog No:114725(RNASET2 antibody) at dilution of 1:100 (under 40x lens)



IF result of Catalog No:114725(anti-RNASET2) in COS7 cell by Dr. Nancy Kedersha. COS7 cells transiently transfected with FAST-KD4-YFP, counterstained with PTG RNASET2 antibody (red) and human anti-mitochondrial antigen in blue. Note that FAST-KD4-YFP overexpression alters mitochondrial morphology, and is also present at stress granules (green only).



IP Result of anti-RNASET2 (IP:Catalog No:114725, 4ug; Detection:Catalog No:114725 1:300) with BxPC-3 cells lysate 4000ug.