

# ELAVL3 Polyclonal Antibody



Catalog Number: 164725

## Product name

ELAVL3 Polyclonal Antibody

## Specificity

Human, Mouse, Rat

## Antibody description

Polyclonal antibody to ELAVL3

## Preparation

Antigen: A synthetic peptide corresponding to a sequence within amino acids 1-100 of human ELAVL3 (NP\_001411.2).

## Formulation

PBS with 0.02% sodium azide, 50% glycerol, pH7.3.

## Storage

Store at -20°C. Avoid freeze / thaw cycles.

## Clonality

Polyclonal

## Ig Type

Rabbit IgG

## Applications

WB, IHC, IF

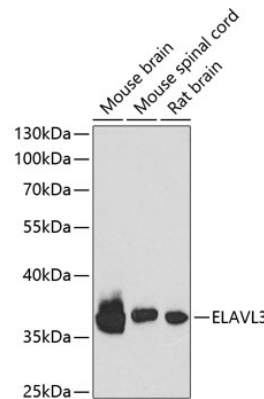
## Dilutions

WB 1:500 - 1:1000

IHC 1:50 - 1:200

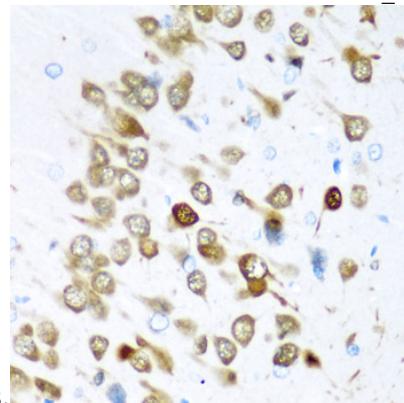
IF 1:50 - 1:200

## Validations



Western blot - ELAVL3 Polyclonal Antibody

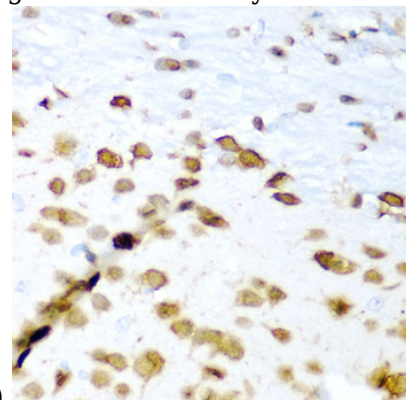
Western blot analysis of extracts of various cell lines, using ELAVL3 antibody at 1:1000 dilution. Secondary antibody: HRP Goat Anti-Rabbit IgG (H+L) at 1:10000 dilution. Lysates/proteins: 25ug per lane. Blocking buffer: 3% nonfat dry milk in TBST. Detection: ECL Enhanced Kit. Exposure



time: 60s.

Immunohistochemistry - ELAVL3 Polyclonal Antibody

Immunohistochemistry of paraffin-embedded rat brain using ELAVL3 antibody at dilution of 1:200



(40x lens).

# ELAVL3 Polyclonal Antibody



Catalog Number: 164725

---

Immunohistochemistry - ELAVL3 Polyclonal Antibody

Immunohistochemistry of paraffin-embedded mouse brain using ELAVL3 antibody at dilution of 1:200 (40x lens).