

# PEX1 antibody

Catalog Number: 113725

## Product name

PEX1 antibody

IHC: 1:20-1:200

IF: 1:20-1:200

## Specificity

Human, Mouse, Rat; other species not tested.

## Antibody description

PEX1 Rabbit Polyclonal antibody. Positive IF detected in HeLa cells, A431 cells. Positive IHC detected in human liver cancer tissue, human kidney tissue. Positive WB detected in Jurkat cells, HeLa cells. Observed molecular weight by Western-blot: 143 kDa

## Preparation

This antibody was obtained by immunization of PEX1 recombinant protein (Accession Number: NM\_000466). Purification method: Antigen affinity purified.

## Formulation

PBS with 0.02% sodium azide and 50% glycerol pH 7.3.

## Storage

Store at -20°C. DO NOT ALIQUOT

## Clonality

Polyclonal

## Ig Type

Rabbit IgG

## Applications

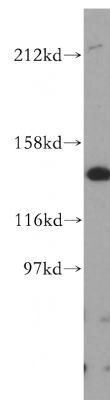
ELISA, WB, IHC, IF

## Dilutions

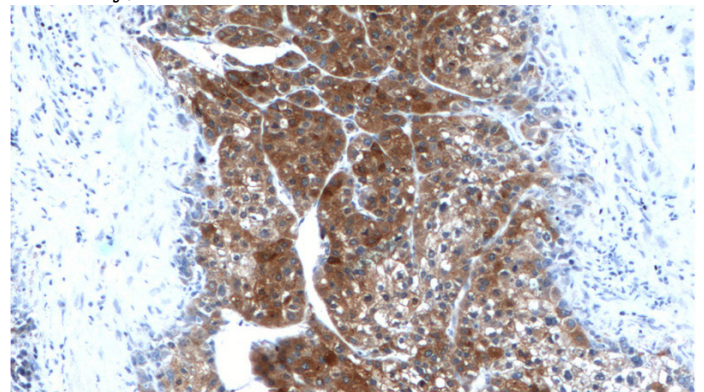
Recommended Dilution:

WB: 1:500-1:5000

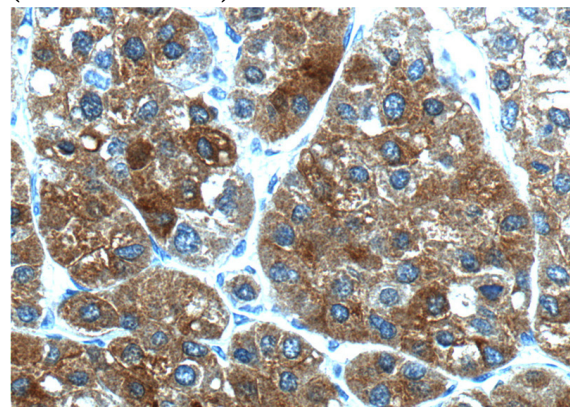
## Validations



Jurkat cells were subjected to SDS PAGE followed by western blot with Catalog No:113725(PEX1 antibody) at dilution of 1:500



Immunohistochemistry of paraffin-embedded human liver cancer tissue slide using Catalog No:113725(PEX1 Antibody) at dilution of 1:200 (under 10x lens).



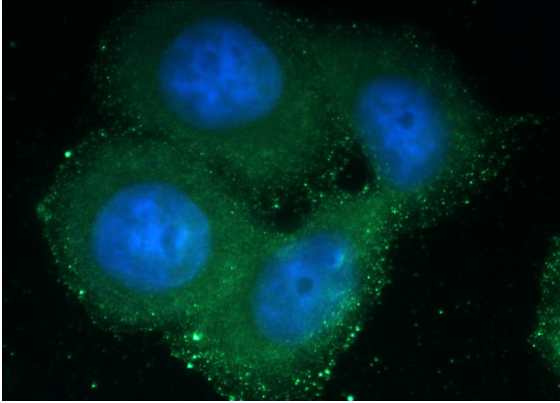
Immunohistochemistry of paraffin-embedded

# PEX1 antibody

Catalog Number: 113725

---

human liver cancer tissue slide using Catalog No:113725(PEX1 Antibody) at dilution of 1:200 (under 40x lens).



Immunofluorescent analysis of HeLa cells using Catalog No:113725(PEX1 Antibody) at dilution of 1:50 and Alexa Fluor 488-conjugated AffiniPure Goat Anti-Rabbit IgG(H+L)