

# Anti-STAG3 antibody



Catalog Number: 176325

## Product name

Anti-STAG3 antibody

## Ig Type

Rabbit IgG

## Specificity

Human

## Applications

WB, IHC-P

## Antibody description

Rabbit polyclonal antibody to STAG3

## Dilutions

WB: 1:500-1:2000

## Preparation

This antigen of this antibody was the antiserum was produced against synthesized peptide derived from human stag3. aa range:1161-1210

IHC-P: 1:100-1:300

## Formulation

Liquid, Liquid in PBS containing 50% glycerol, 0.5% BSA and 0.02% sodium azide.

## Storage

Store at +4°C after thawing. Aliquot store at -20°C or -80°C. Avoid repeated freeze / thaw cycles.

## Clonality

Polyclonal

## Validations

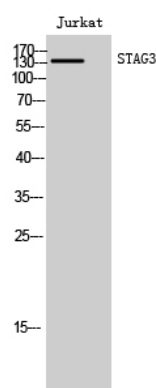


Fig1:: Western Blot analysis of Jurkat cells using STAG3 Polyclonal Antibody cells nucleus extracted by Minute TM Cytoplasmic and Nuclear Fractionation kit (SC-003, Inventibiotec, MN, USA).