

# UPF1 antibody

Catalog Number: 116625

## Product name

UPF1 antibody

IP: 1:200-1:2000

IHC: 1:20-1:200

## Specificity

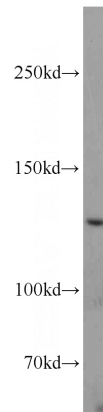
Human, Mouse, Rat; other species not tested.

IF: 1:20-1:200

## Antibody description

UPF1 Rabbit Polyclonal antibody. Positive IHC detected in human kidney tissue. Positive IF detected in HepG2 cells, MCF-7 cells. Positive WB detected in HepG2 cells, Raji cells. Positive IP detected in Raji cells. Observed molecular weight by Western-blot: 130 kDa

## Validations



## Preparation

This antibody was obtained by immunization of UPF1 recombinant protein (Accession Number: NM\_002911). Purification method: Antigen affinity purified.

HepG2 cells were subjected to SDS PAGE followed by western blot with Catalog No:116625(UPF1 antibody) at dilution of 1:1000

## Formulation

PBS with 0.02% sodium azide and 50% glycerol pH 7.3.

## Storage

Store at -20°C. DO NOT ALIQUOT

## Clonality

Polyclonal

## Ig Type

Rabbit IgG

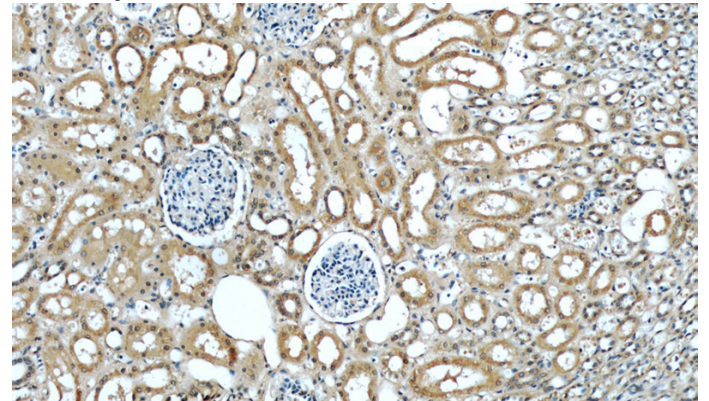
## Applications

ELISA, WB, IHC, IF, IP

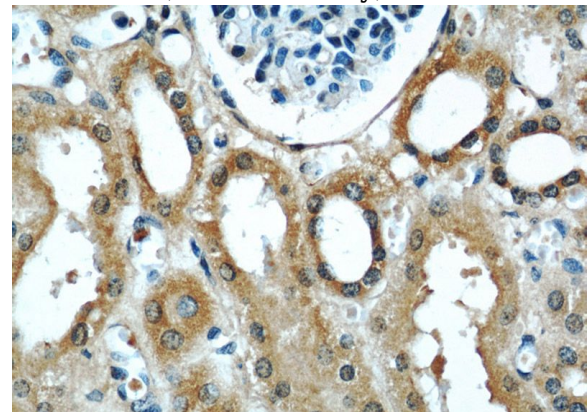
## Dilutions

Recommended Dilution:

WB: 1:500-1:5000



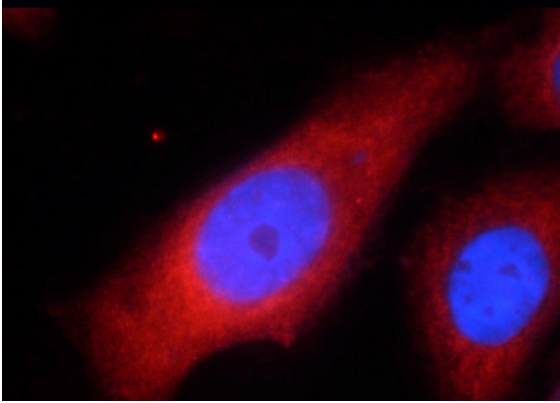
Immunohistochemistry of paraffin-embedded human kidney slide using Catalog No:116625(UPF1 Antibody) at dilution of 1:50



# UPF1 antibody

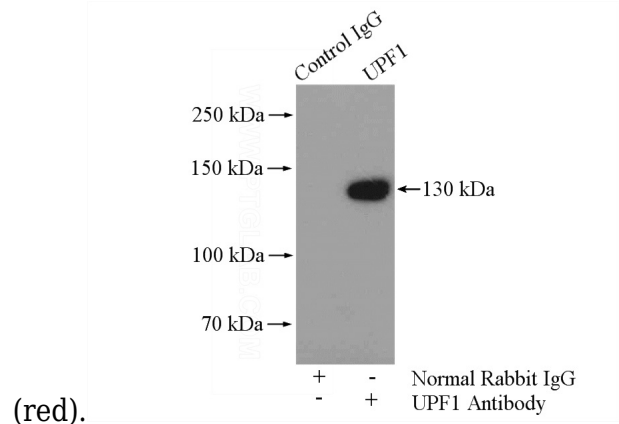
Catalog Number: 116625

Immunohistochemistry of paraffin-embedded human kidney slide using Catalog No:116625(UPF1 Antibody) at dilution of 1:50



Immunofluorescent analysis of HepG2 cells using Catalog No:116625(UPF1 Antibody) at dilution of

1:50 and Rhodamine-labeled goat anti-rabbit IgG



(red).

IP Result of anti-UPF1 (IP:Catalog No:116625, 4ug; Detection:Catalog No:116625 1:500) with Raji cells lysate 2000ug.