

General Information

Gene Name Synonym

S-100 protein alpha chain; S-100 protein subunit alpha; S100 calcium-binding protein A1

Protein Construction

A DNA sequence encoding the mouse S100A1 (P56565) (Gly 2-Ser 94) was expressed, with a polyhistidine tag at the N-terminus.

Organism

Mouse

Expression Host

E. coli

QC Testing

Activity

Measured by its ability to bind human AGER in a functional ELISA.

Purity

> 95 % as determined by SDS-PAGE

Endotoxin

Please contact us for more information.

Stability

Samples are stable for up to twelve months from date of receipt at -70°C

Predicted N terminal

Met

Molecular Mass

The recombinant mouse S100A1 consisting of 109 amino acids and has a calculated molecular mass of 12.5 kDa. rmS100A1 migrates as an approximately 14 kDa band in SDS-PAGE under reducing conditions.

Formulation

Lyophilized from sterile PBS, pH 7.5

1. 5 % trehalose and mannitol are added as protectants before lyophilization.

2. Please contact us for any concerns or special requirements.

Usage Guide

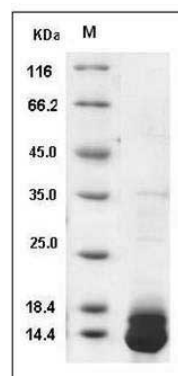
Storage

Store it under sterile conditions at -20°C to -80°C. It is recommended that the protein be aliquoted for optimal storage. Avoid repeated freeze-thaw cycles.

Reconstitution

Adding sterile water, prepare a stock solution of 0.25 mg/ml. Concentration is measured by UV-Vis.

SDS-PAGE



Mouse S100A1 Protein (His Tag) SDS-PAGE